

M1926 Maintenance Manual (service center)

Edit by:	Date:	2019-2-26
Review by:	Date:	
Approve by:	Date:	

confidential document

Revision record

Date	Revision version	Revision reason	Modify section	Modify description	Author
Feb, 26th	Frist edition				

confidential document

CONTENT

CHAPTER 1	CELLPHONE INTRODUCTION	4
1.1.	PRODUCT APPEARANCE MAP	4
1.2	BRIEF INTRODUCTION OF PRODUCT CHARACTERISTICS	5
CHAPTER 2	INSTRUCTIONS FOR MAINTENANCE INFORMATION	9
2.1	MAINTENANCE PRECAUTIONS	9
CHAPTER 3	EXPLODE VIEW	10
CHAPTER 4	COMPONENT LOCATION MAP	12
CHAPTER 5	COMMON FAULT DETECTION AND MAINTENANCE	14
1.	NO BOOT ISSUE	15
2.	RECOGNIZED SIM CARD MALFUNCTION	16
3.	VOLUME BUTTON MALFUNCTION	17
4.	SCREEN TOUCH MALFUNCTION.....	18
5.	LCD DISPLAY MALFUNCTION	19
6.	SPEAKER MALFUNCTION	20
7.	RECEIVER MALFUNCTION	21
8.	HEADSET MALFUNCTION	22
9.	MAIN MIC MALFUNCTION	23
10.	VICE-MIC MALFUNCTION	24
11.	REAR CAMERA AND FRONT CAMERA MALFUNCTION	25
12.	FLASH LIGHT MALFUNCTION	26
13.	SIGNAL MALFUNCTION	27
14.	FINGER PRINT MALFUNCTION.....	28
15.	WIFI / BLUETOOTH / GPS MALFUNCTION	29
16.	INFRARED SENSOR MALFUNCTION	30
17.	MOTOR MALFUNCTION	31
18.	CHARGER MALFUNCTION	32
19.	BREATH LIGHT MALFUNCTION	30
20.	SENSOR MALFUNCTION.....	33

Chapter 1 M1926 cellphone introduction

1.1 The cellphone of M1926 brief introduction

M1926 View:



1.2 Technical specifications

Product overview	Product model	16Xs		
	Item name	M1926		
	Operating system	Flyme 7+Android P		
	Listing Date	2019.06		
version and standard		Band	Model	SN prefix
	Oversea version	GSM: B2/B3/B5/B8 ; CDMA : Bc0 ; WCDMA: B1/B2/B4/B5/B8 ; TDD: B40 ; FDD: B1/B2/B3/B4/B5/B7/B8/B20	M926H	926H
ID Specif	whole unit Size	152*74.4*8.3mm		
	whole unit Weight	165g		
	Color			
	ID technology	Plastic Intermediate Frame+ Composite Plate		
	SIM CARD	Dual nano card		
CPU	Brand	Qualcomm		
	model	SDM675(SM6150)		
	Frequency	2*Kryo Gold 2.0GHz+6*Kryo Silver 1.7GHz		
	GPU	Adreno 612		
	Framework	Qualcomm® Kryo™ CPU 460		
storage	RAM	6GB , LPDDR4X , EMCP		
	ROM	64GB/128GB		
	Storage combination	6+64GB/6+128GB		
	Storage card	not support		
Screen	TP	TP type	2.5D Glass , thickness 0.7mm	
		TP function	Black Gesture unlock / Wet hand operation / Glove handling/10 touch/Edge preventing mistakenly touch	
		TP technology	on-cell	
	LCM	LCM size	6.2" 18.6 : 9	
		Display technique	AMOLED	

		resolution	2232*1080 (FHD+)
		color	1600W
		brightness	430nit (typ)
		Visual angle	Full
		PPI	403
		contrast	100,000:1 (typ)
camera	Rear camera	pixel	48M (0.8um) +5M + 8M
		Sensor	SAMSUNG S5KGM1+S5K5E9+S5K4H7
		Camera lens	sunny 39176A (6P) +60015A1 (4P) +ZE0021A1 (5P)
		aperture	F1.7+F1.9+F2.2
		Optical anti shake	not support
		Autofocus	PDAF
		Focusing mode	phase detection
		ISP	share the build in ISP
		size	Module body
		Flash light	one
		Camera lens	One - sided antireflection film, anti-fingerprint coating
	Front camera	pixel	16M
		Sensor	S5K3T2
		Camera lens	ZE0020A1 (5P)
		aperture	F/2.2
		Optical anti shake	not support
		Autofocus	FF
		Focusing mode	N/A
		ISP	share the build in ISP
		size	Module body
Flash light	not support		
Battery	Battery capacity	4000mAh (typ)	
	mCharge	0.7C	
	Battery energy density	685WH/L	
Power	PMU	PM6150 PM6150A	
	Fuel gage	PM6150	
	Charger	PM6150	
Charger	Specifications	9V2A	

	protocol	M charge+QC 2.0	
Audio	HIFI	not support	
	Smart PA	support	
	noise reduction	support	
	Audio chip	support	
Audio device	Speaker	1217、	
	Receiver	0809	
	MIC	Dual MIC	
Sensor	fingerprint identification	Chipset	GW9518
		TEE vendors	Qualcomm qsee
		Payment authentication	WeChat pay and Alipay pay
	ForceTouch	not support	
	Pressure	not support	
	Gravitational acceleration	support	
	gyroscope	support	
	Distance sensor	support	
	Light sensor	support	
	Electronic compass	support	
Holzer	not support		
Cellular network; wireless network	Applicable frequency	Antenna 824-960MHZ/1710-2690MHZ	
	WLAN	Support 2.4G/5G WIFI ; 802.11a/b/g/n	
	Bluetooth	Support BT5.0	
	GPS	GPS/Glonass/Beidou	
	call and standby	Dual sim card dual standby single pass	
	VoLTE	Support	
	RF	SDR660	
	NFC	not support	
Other functions	Motor	COMMON Motor	not support Linear Motor
	Pedometer	support	
	Breathing light	support	
	FM	not support	
	Main antenna and Vice antenna switch	not support	

external port	OTG	support
	USB data port	Micro USB 2.0
	headset port	support 3.5mm headset port
Media	Audio format	flac、ape、aAc、ogg、mp3、midi、m4a、amr、wav (ra、wma)
	Audio encoding format	FLAC、APE、DTS、AC3、OGG、AAC、ADPCM、ALAC、MP3、AMR - WB、AMR - NB (COOK、ATRC)
	Video format	mp4、3gp、mov、mkv、avi、flv、mpeg、m2ts、ts (wmv、asf、rm、rmvb)
	Video encoding format	H264、MPEG4、VC1、H263、MPEG2、VP8 (XVID、DIVX5、DIVX4、DIVX3、VP6、WMV3)
	Picture format	JPEG、PNG、GIF、BMP

confidential document

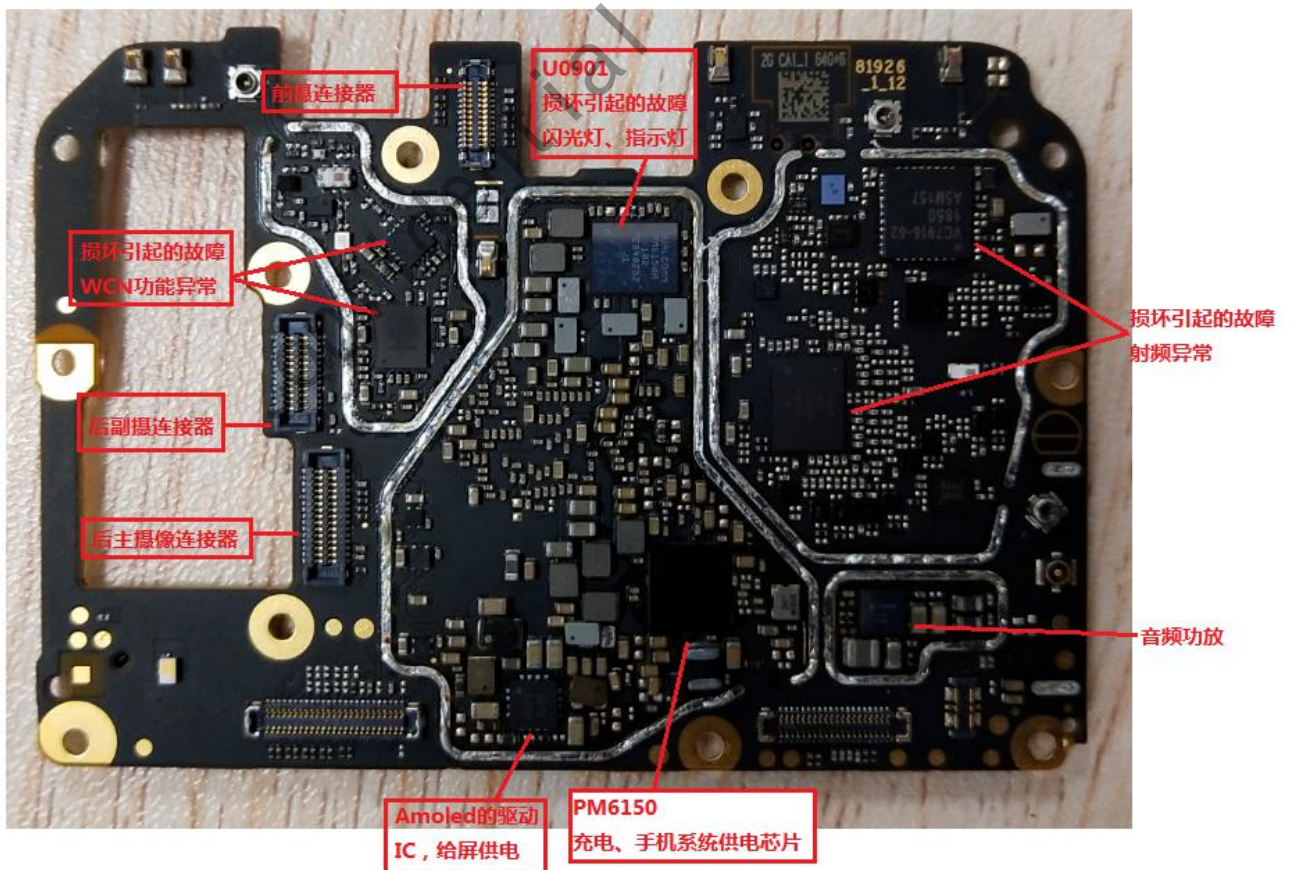
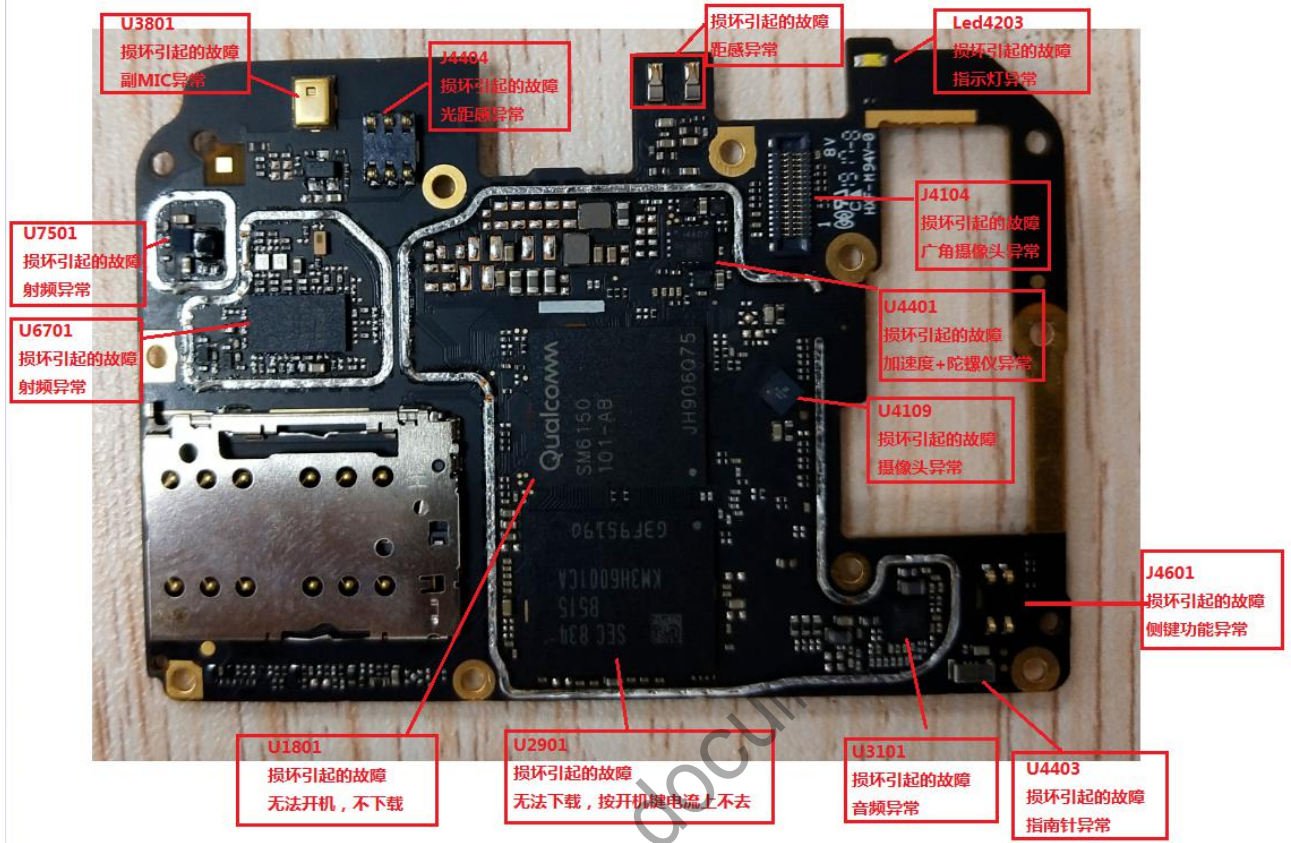
Chapter 2 Caution of Maintenance

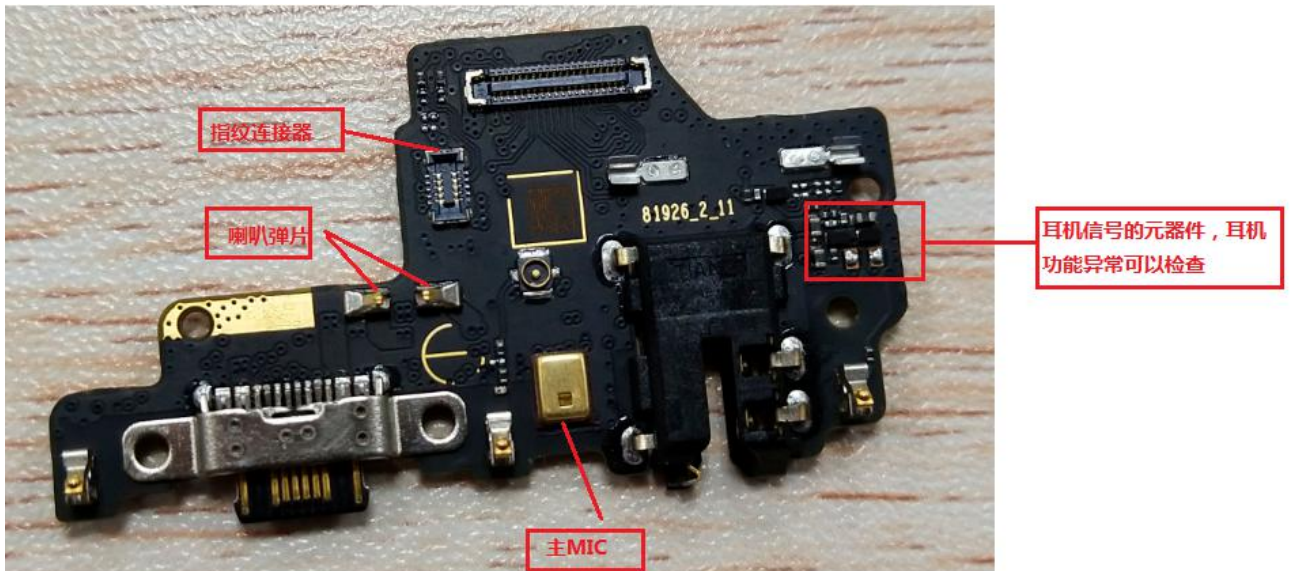
2.1 Caution of Maintenance

1. Only authorized technicians can do maintenance and calibration.
2. Make sure that engineers wear antistatic wrist strap repair phones in antistatic station.
3. Make sure that maintenance room is covered with antistatic mat, and the maintenance table is covered with antistatic material.
4. Make sure that all necessary screws and parts are installed in correct location of phone after maintenance and adjustment.
5. After maintenance, clean the PCBA.
6. As static electricity is the main reason for electronics damages, engineers shall repair phones in an anti-static environment and shall take effective antistatic protection measures.
7. For an occurrence of NG test, engineers should check if the test point is dirty or test point contact is poor.
8. Check if water penetrates to mainboard. If yes, check all the components to see if there is oxidation.
9. 9 Make sure that maintenance room is bright and has natural ventilation. Ventilation: When do maintenance or soldering, some equipment can emit hazardous gas. So the maintenance room should have good natural ventilation. If there are no windows in maintenance room, the room should be equipped with electric air regenerating equipment.
10. There should be obvious antistatic labels in Electrostatic Sensitive area, such as in maintenance area and spare part warehouse.

LCM模组	LCM Module
前壳组件	LCD touch screen assembly
前摄胶套	Front camera rubber case
距离感应胶套	Distance sensing rubber case
副MIC胶套	Assistant MIC Rubber Case
充电指示灯密封泡棉	Charging indicator sealing Foam
光感密封泡棉	Light sensor sealing Foam
受话器	Receiver
BB铜箔	BB Copper foil
PCBA组合组件	PCBA assembly
前置摄像头	Front Camera
PMU铜箔	PMU Copper foil
后摄副摄像头	Assistant Rear camera
后摄主摄像头	Main Rear camera
后壳支架组件	Rear cover bracket assembly
M1.4螺丝	M1.4 Screw
电池盖组件	battery cover
后摄像头镜片	Rear camera lens
USB胶套	USB rubber case
侧键FPC	side button FPC
电池	battery
电池尾端密封麦拉	the rear end of the battery sealed with Myra.
PCBA组件(副板)	PCBA assembly
主MIC胶套	main MIC
PMU导热硅胶	PMU Therma Conductive Tape
卡托组件	sim card tray assembly
马达	Motor
MAIN FPC	MAIN FPC
同轴线	Coaxial Line
喇叭BOX	Speaker Box
指纹模组	Finger print module
侧按键	side button

Chapter 4 Component location map



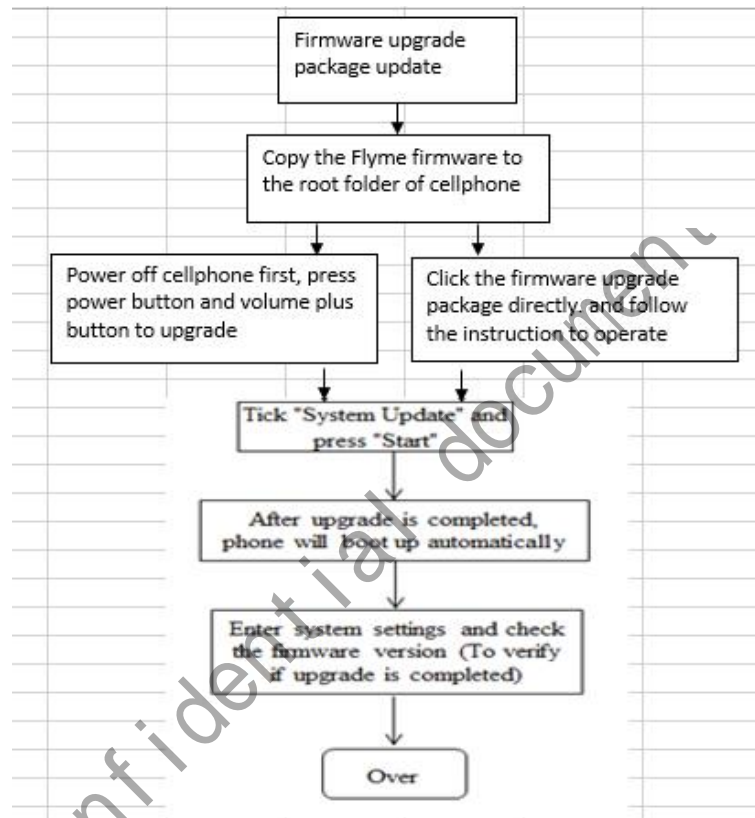


confident document

Chapter5 Common fault detection and maintenance

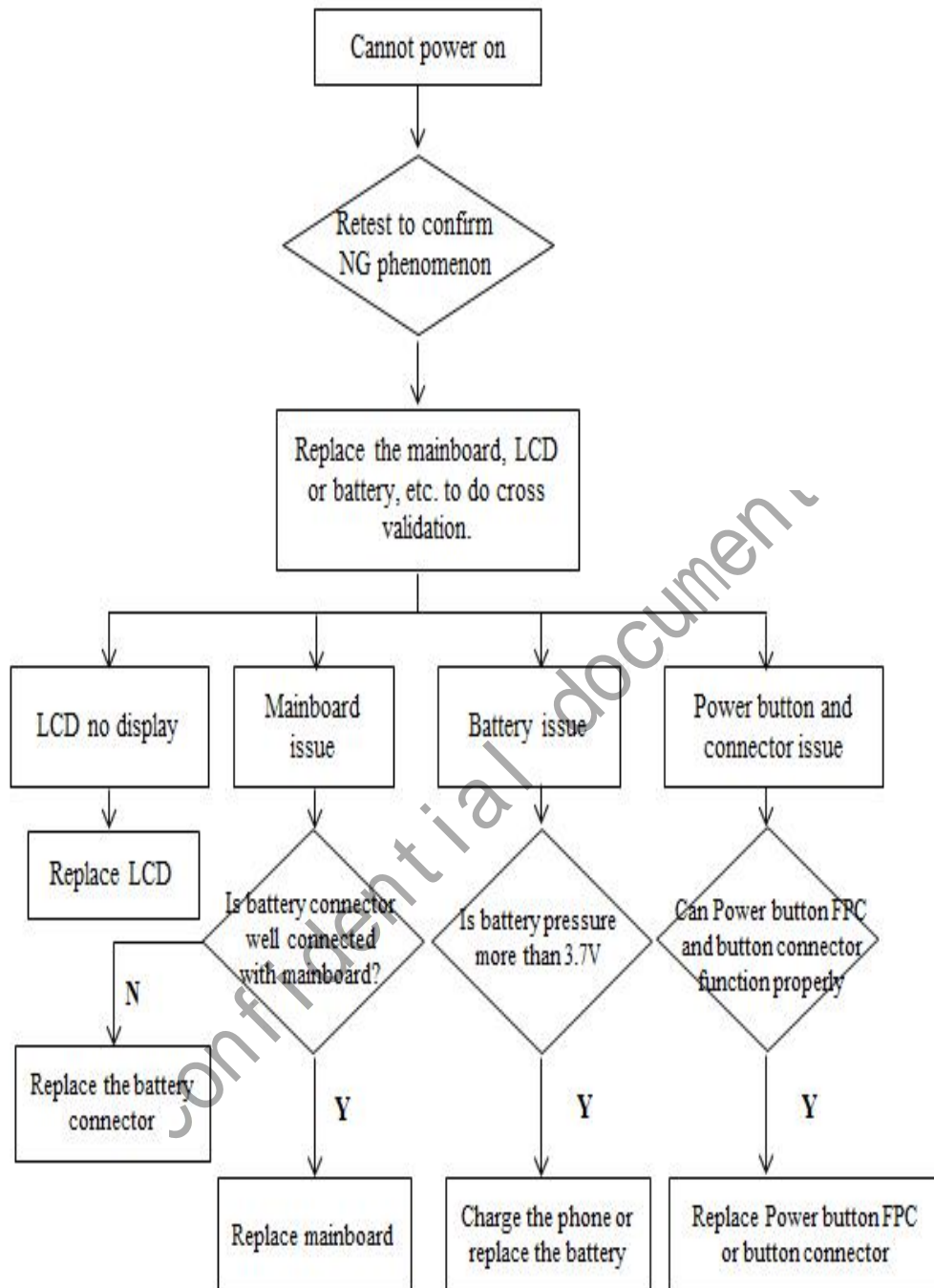
For poor functional machines, the problem of software should be eliminated first. And then investigation of hardware failures. Software upgrade should be follow below step:

Firmware upgrade package update

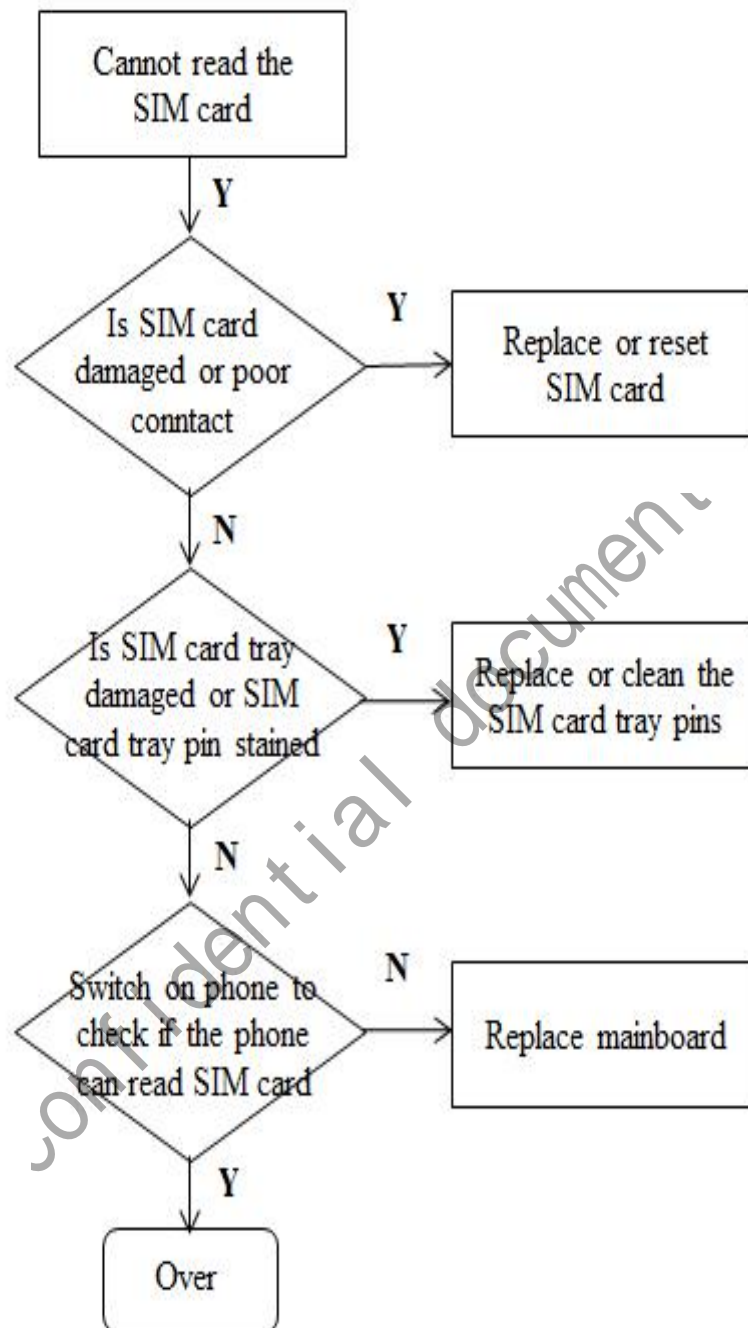


If the phone is flashed to Flyme firmware once again and the current problem still can't be solved, Please flash the phone to Engineer firmware (Refer to M1926 Upgrade Guide). Then use the test software carried by phone to do further tests to troubleshoot.

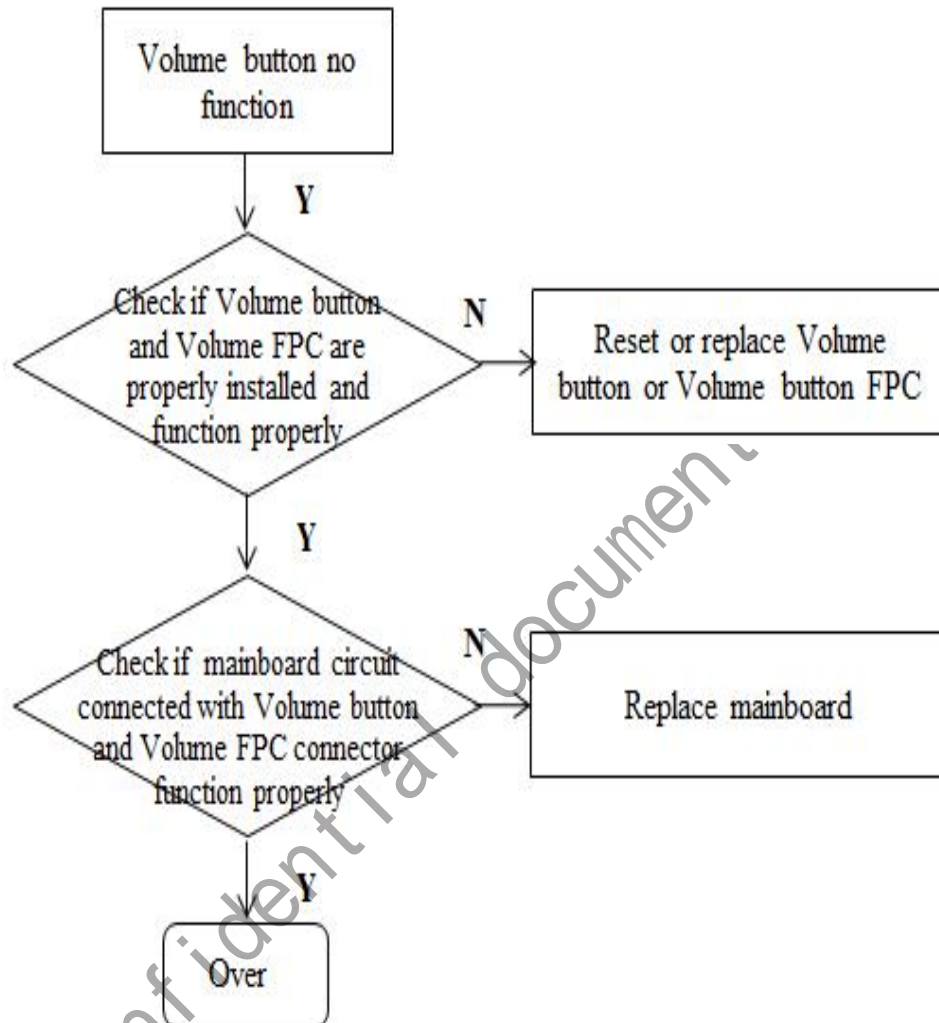
1. No boot issue



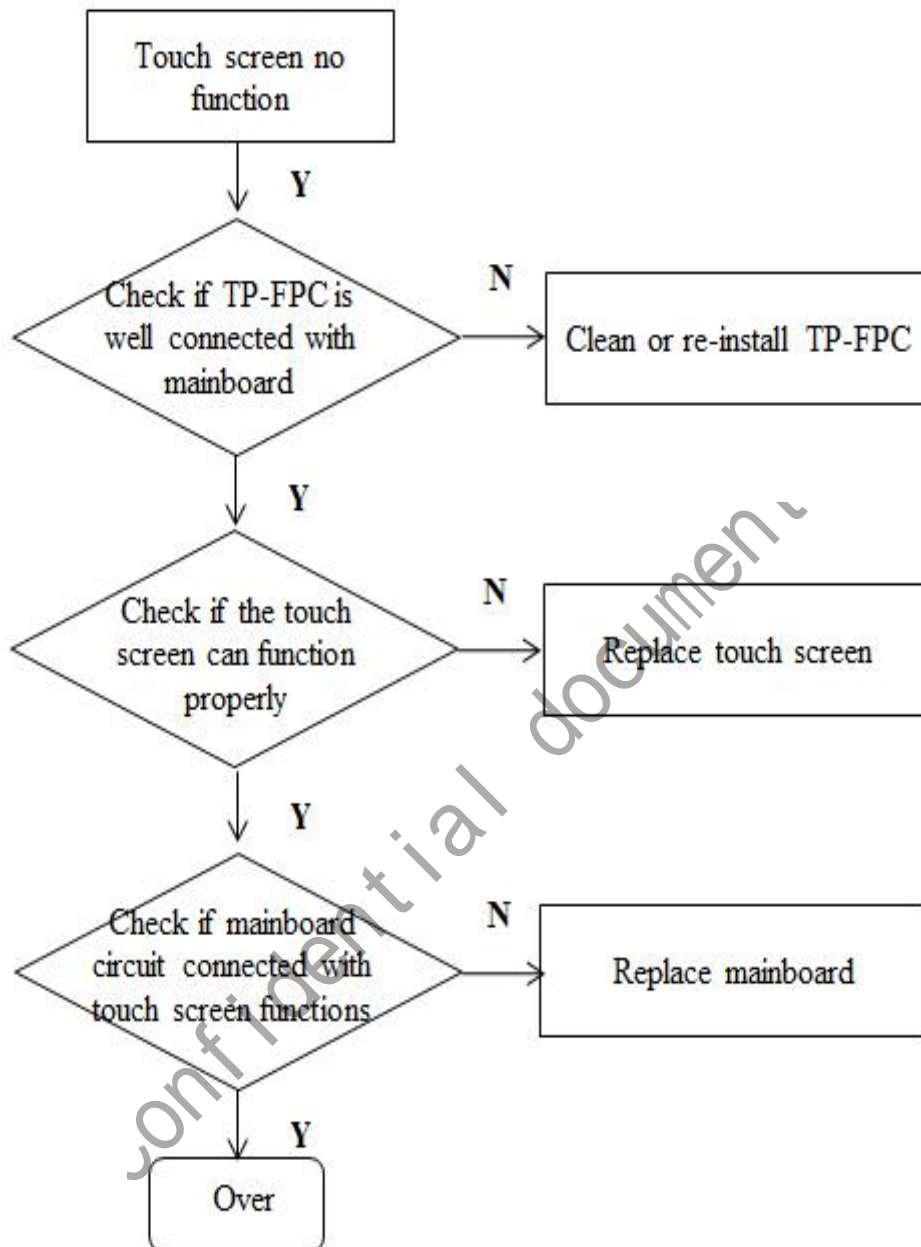
2. Recognized SIM Card Malfunction



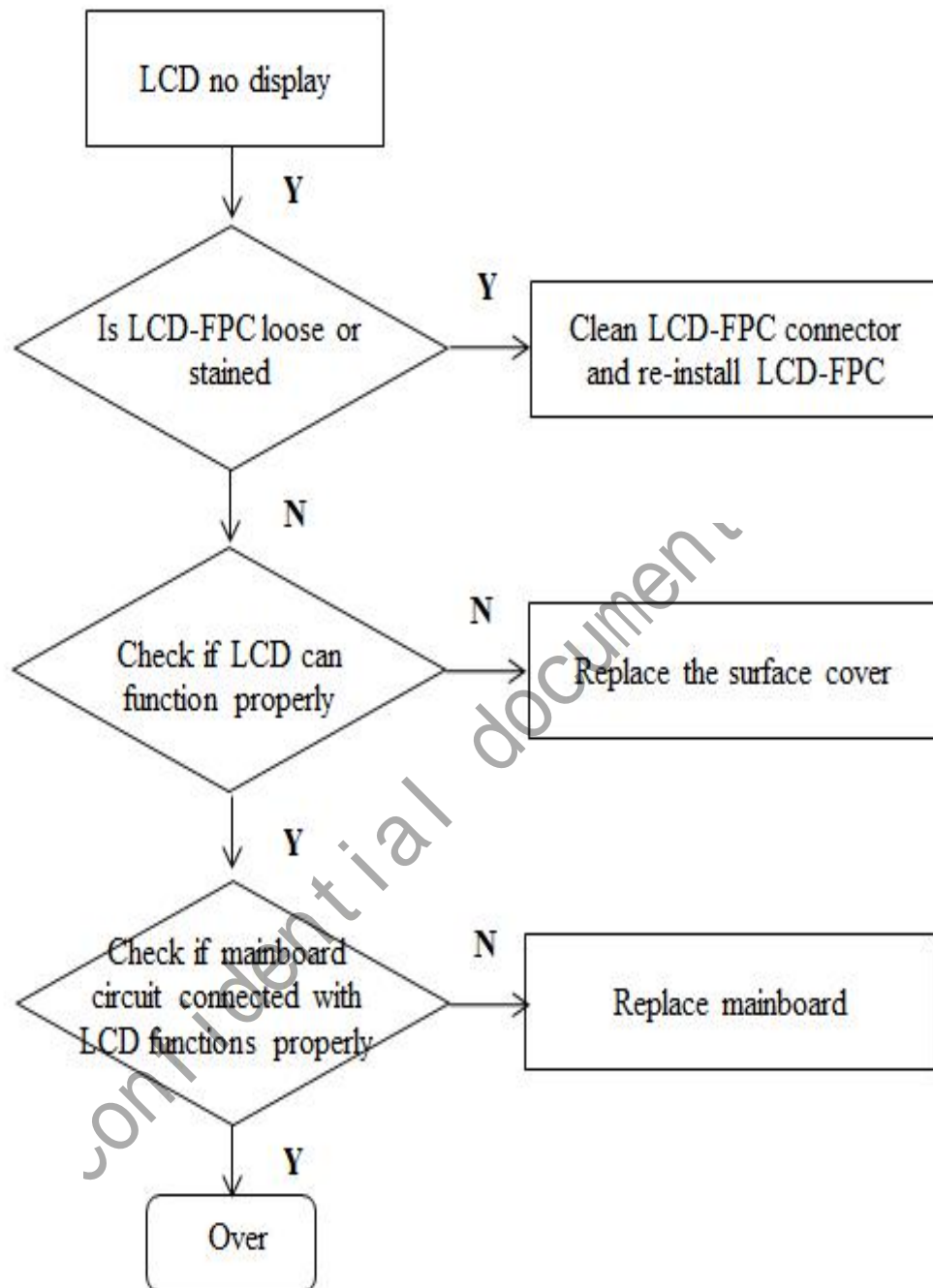
3. Volume button Malfunction



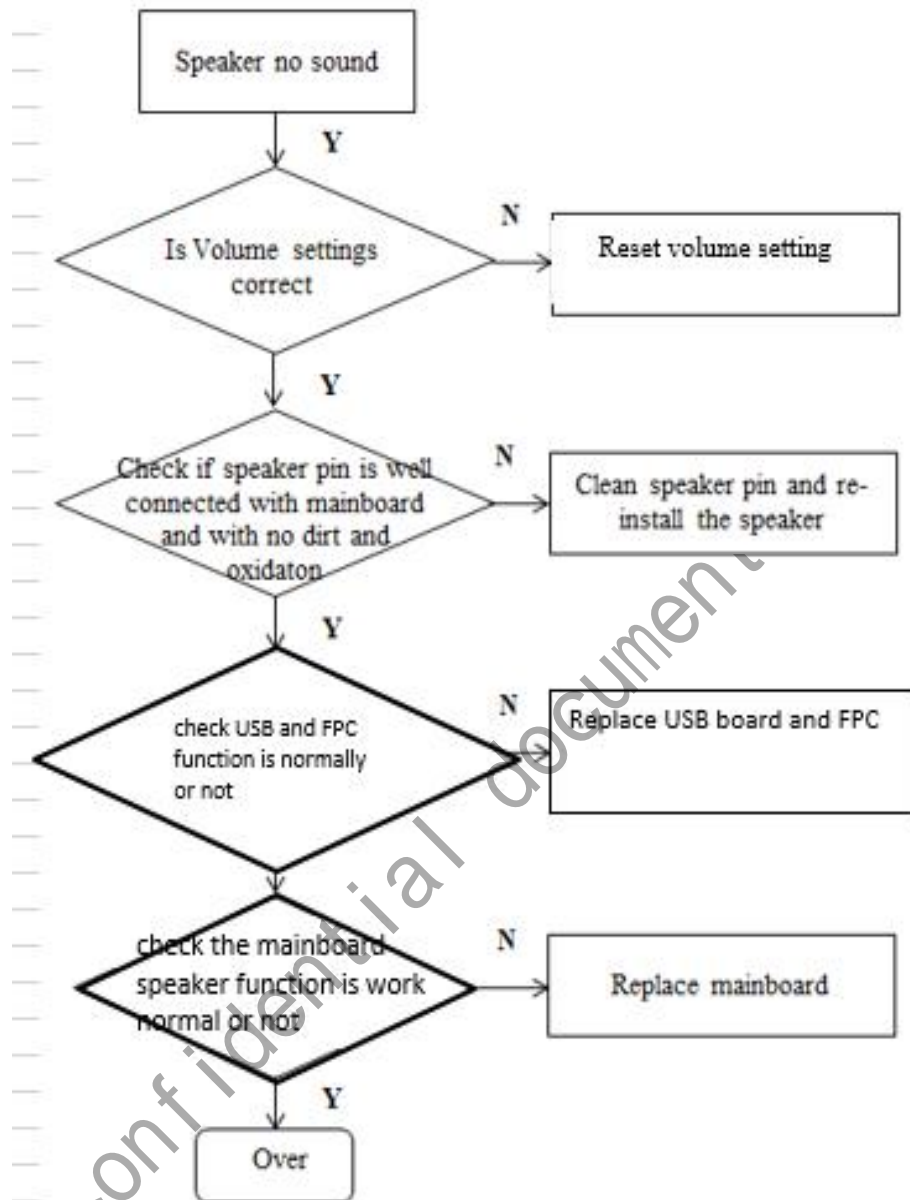
4. Screen Touch Malfunction



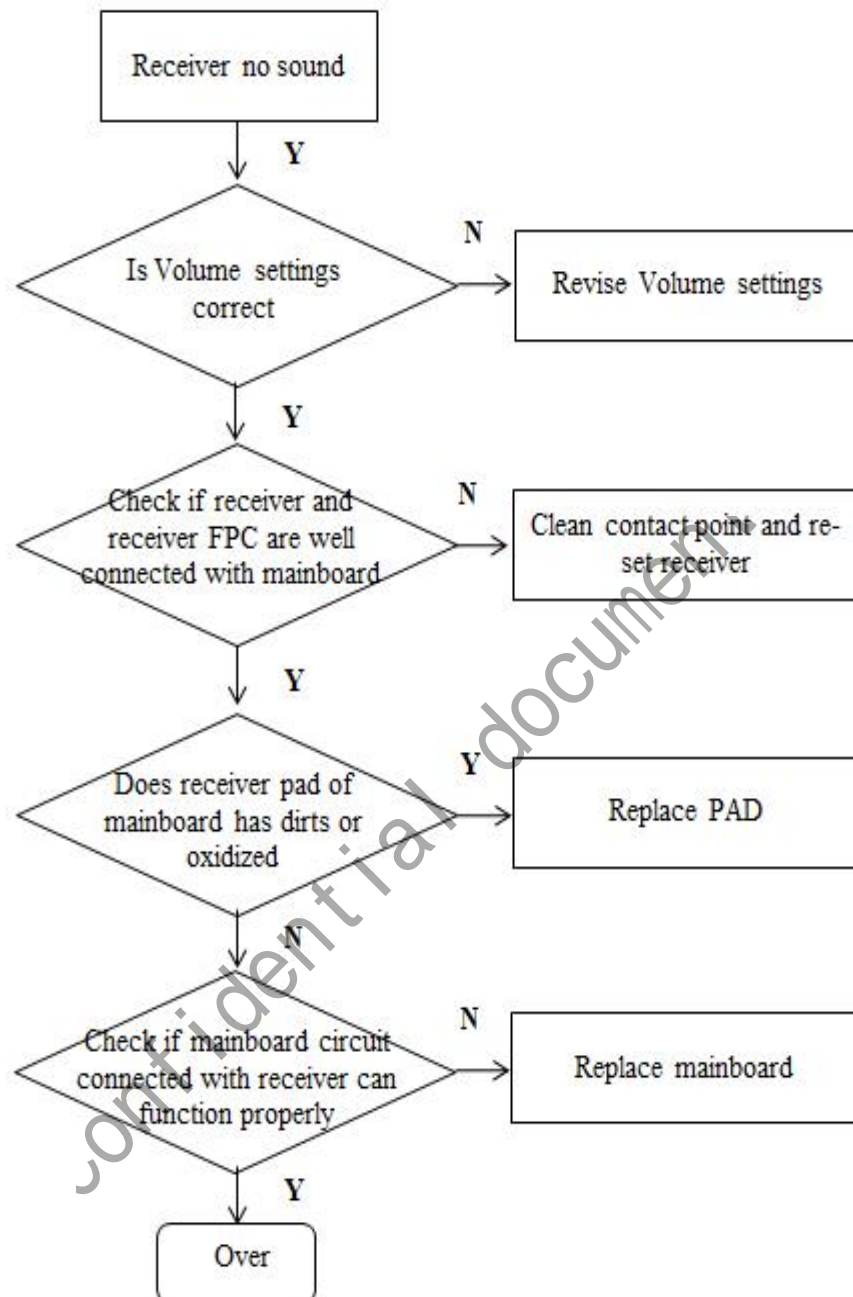
5. LCD display Malfunction



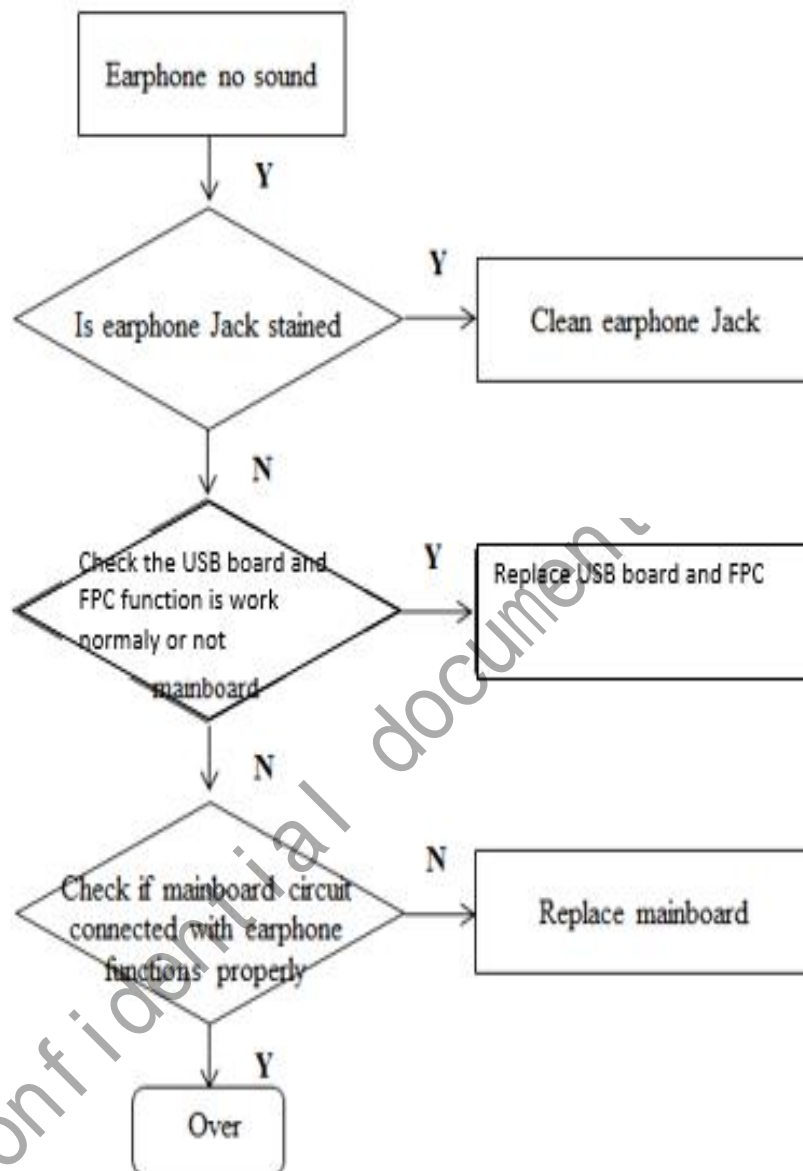
6. Speaker Malfunction



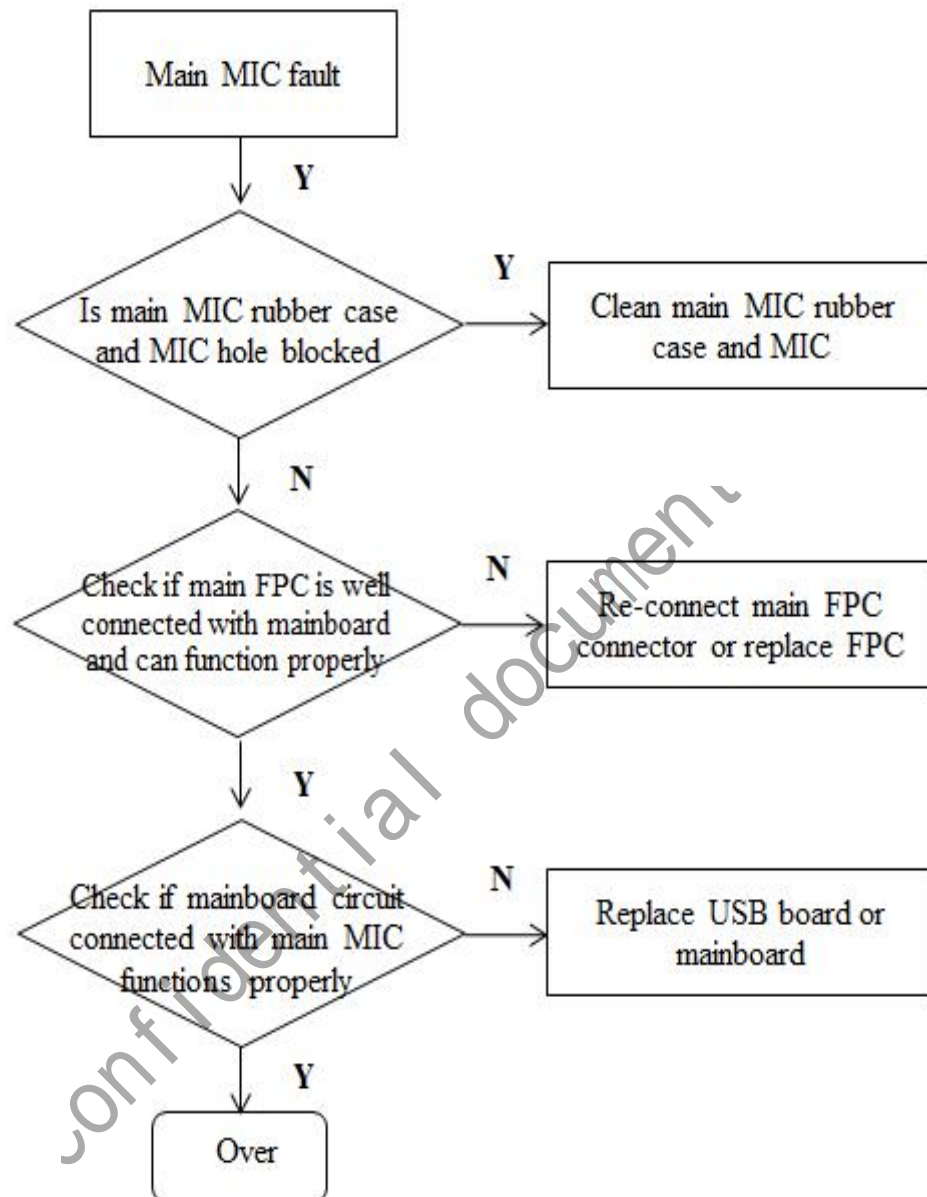
7. Receiver Malfunction



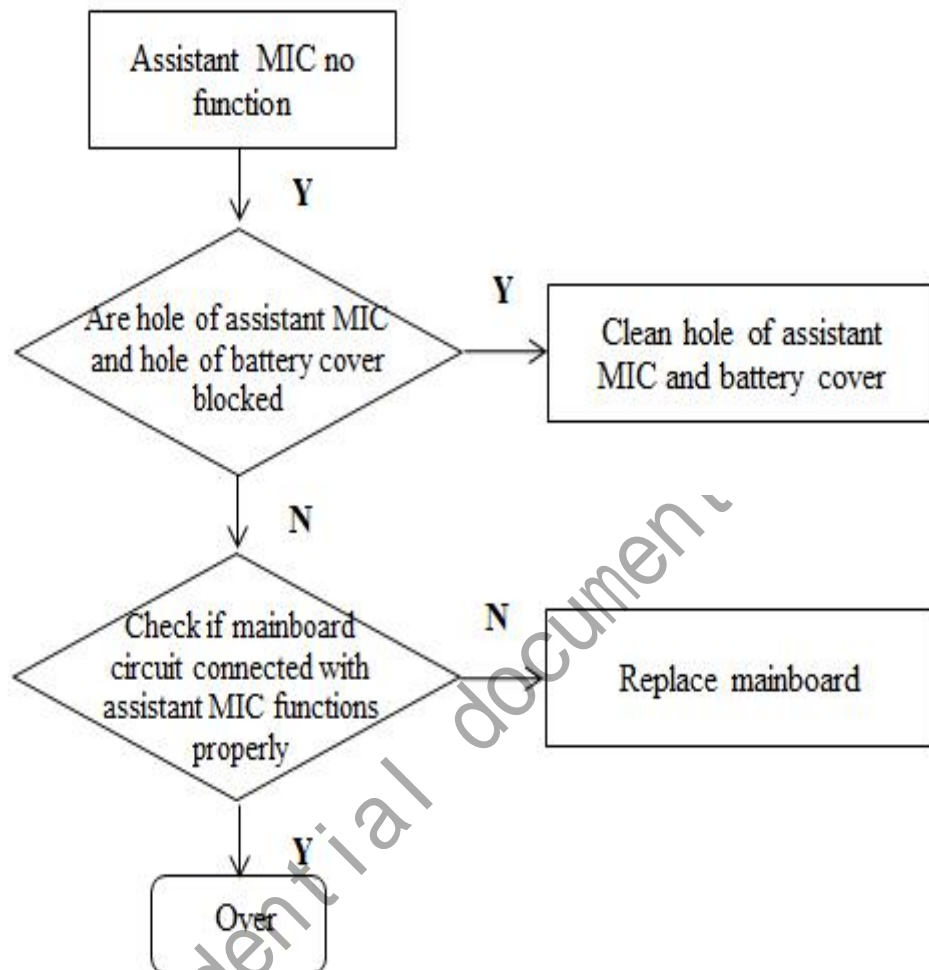
8. Headset Malfunction



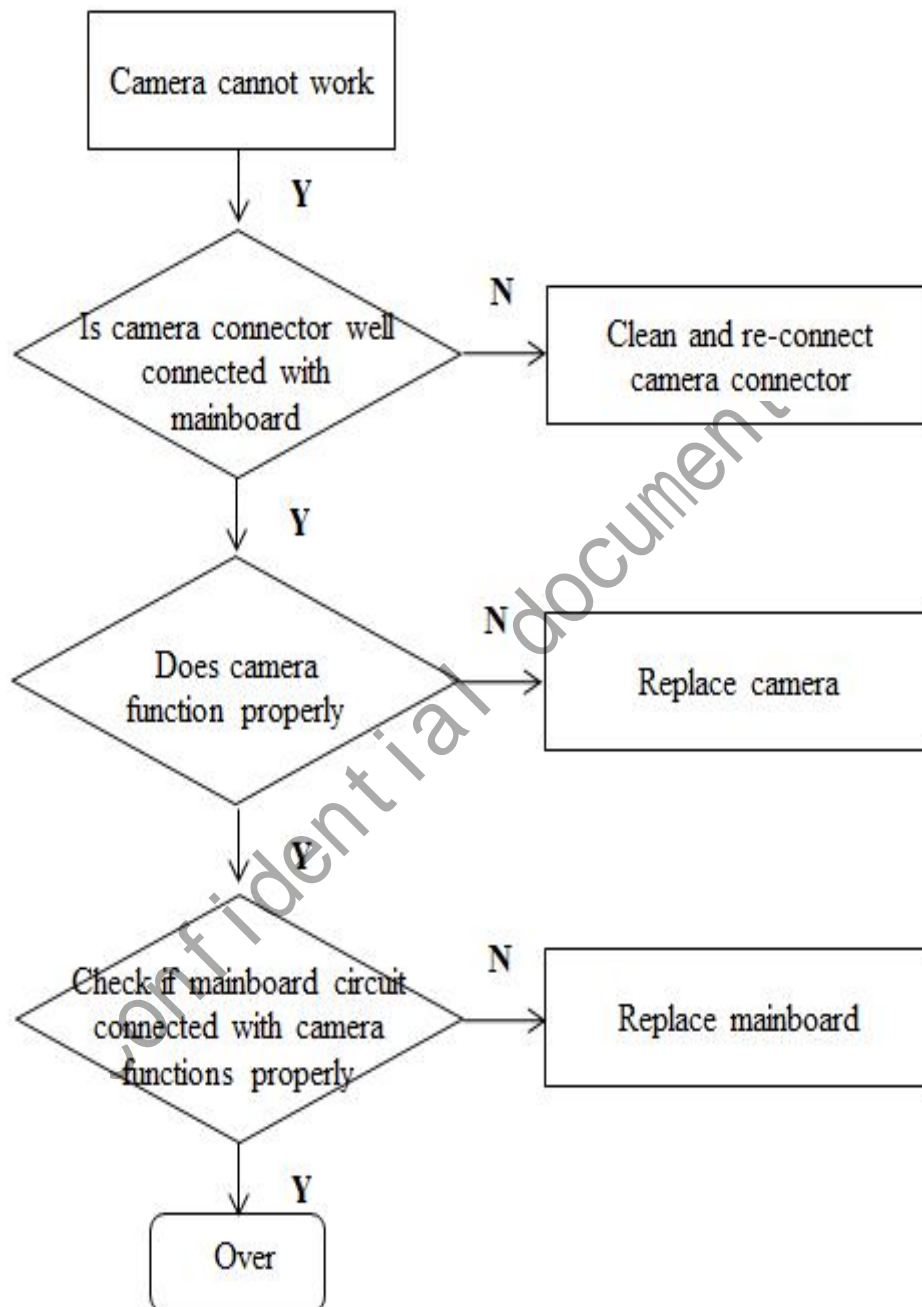
9. Main MIC Malfunction



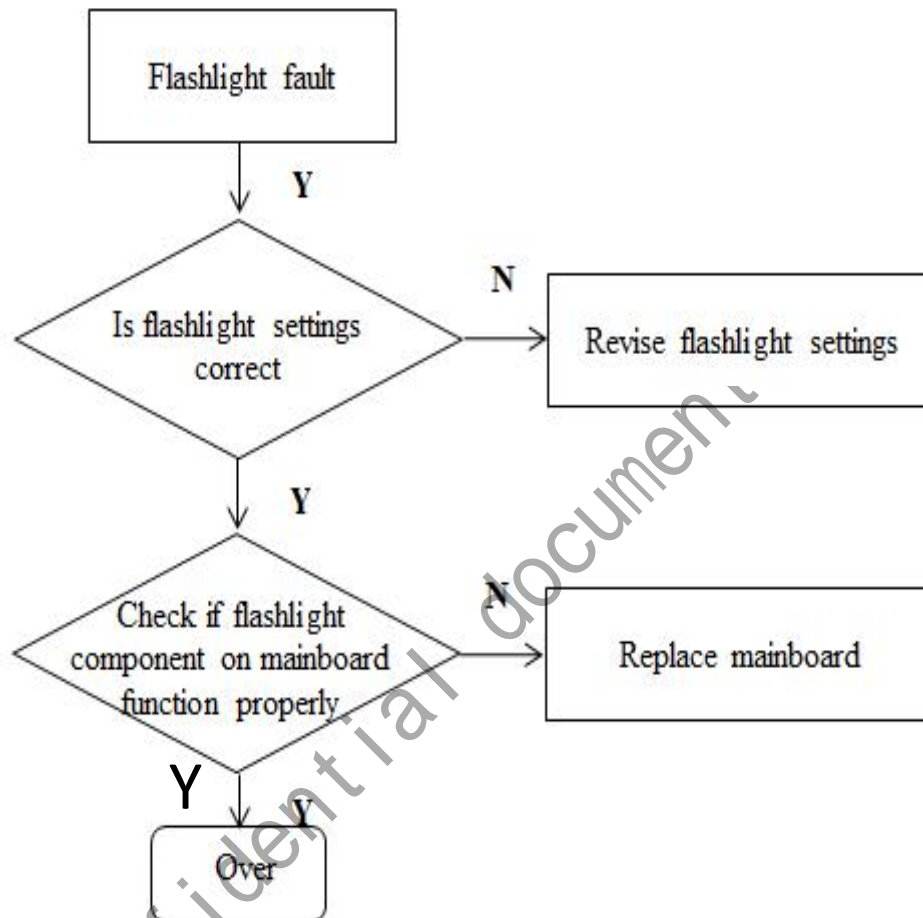
10. Vice-MIC Malfunction



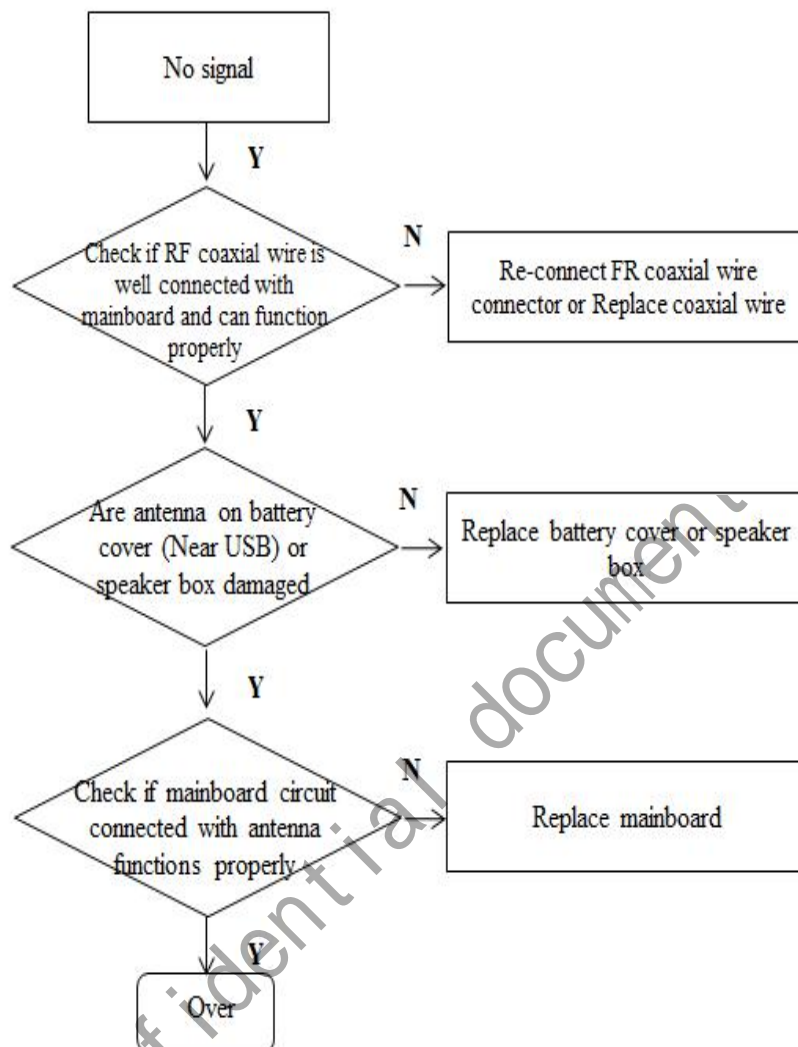
11. Rear camera and front camera Malfunction



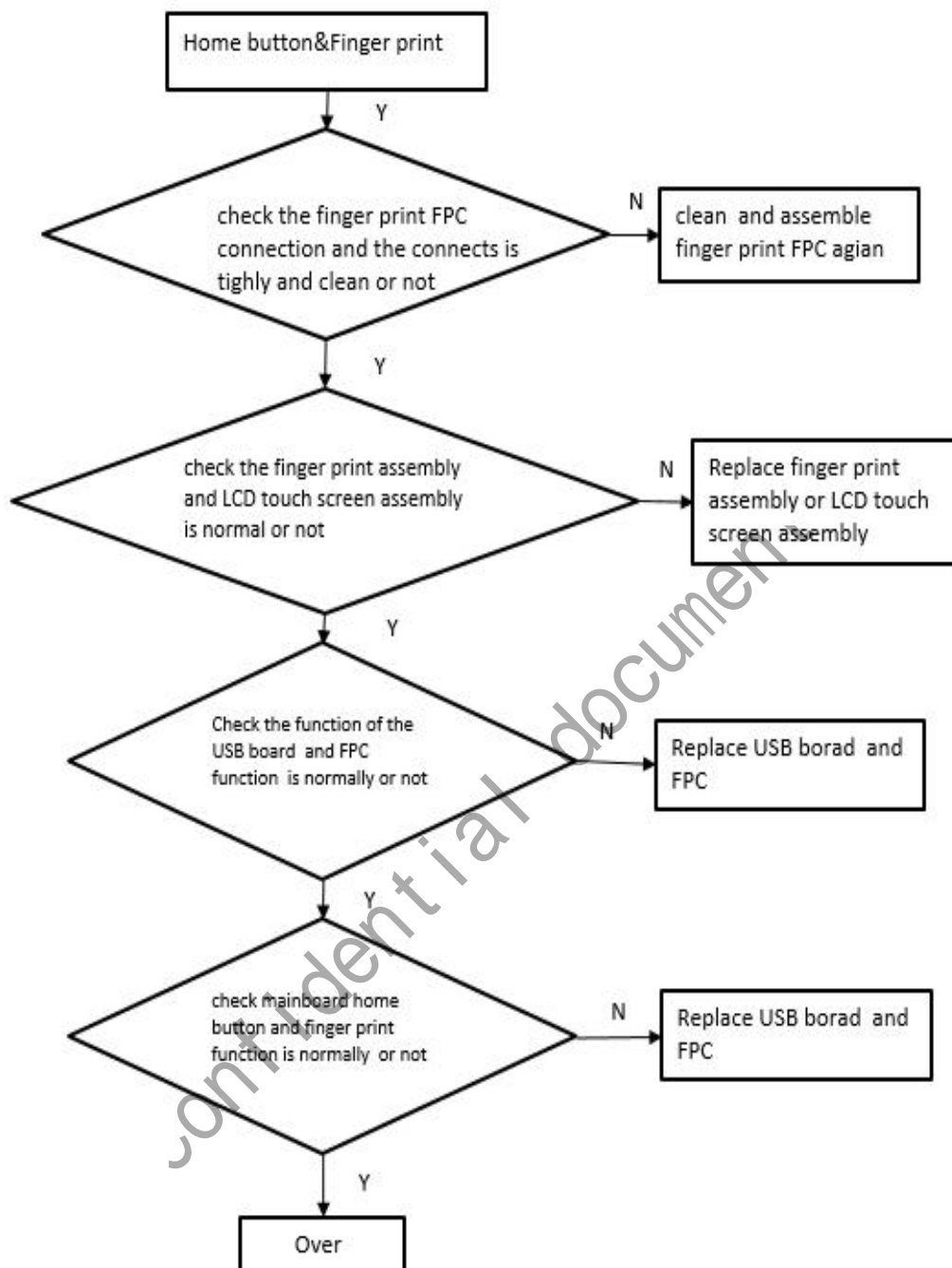
12. Flash light Malfunction



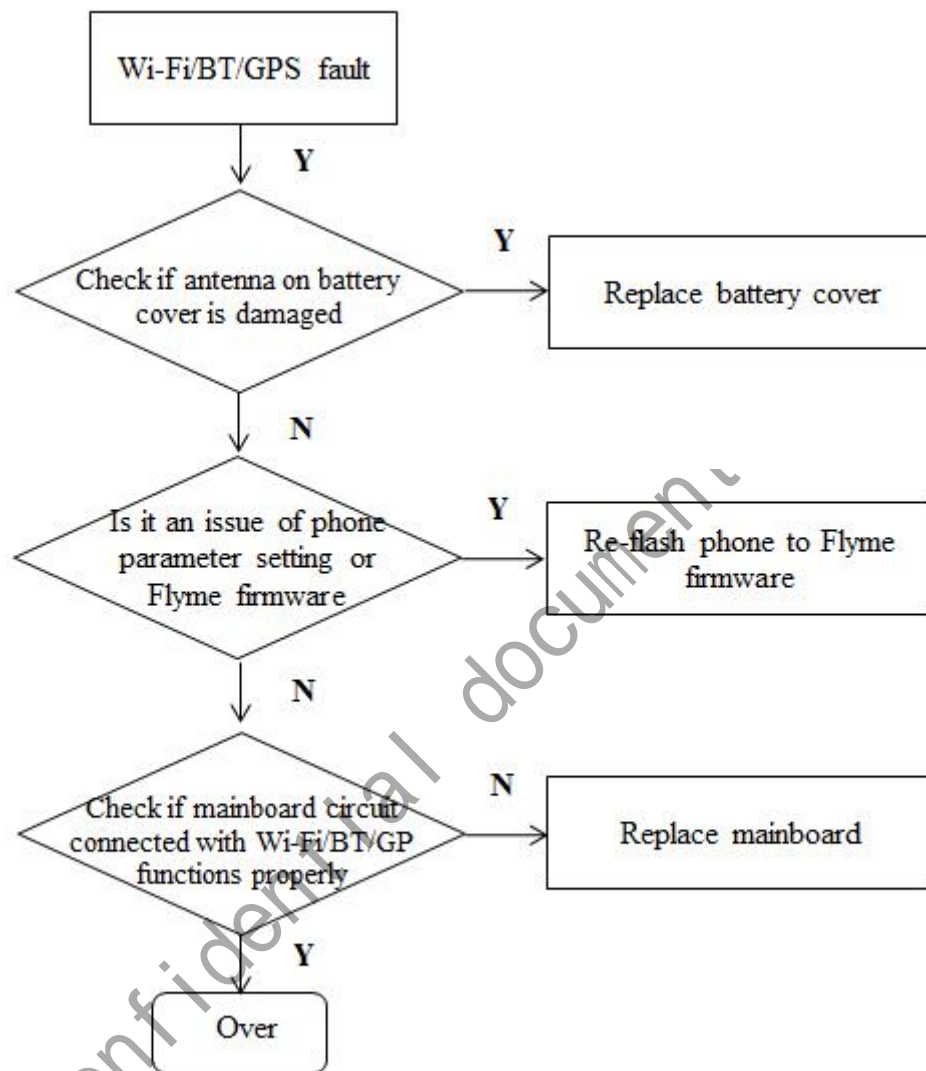
13. Signal Malfunction



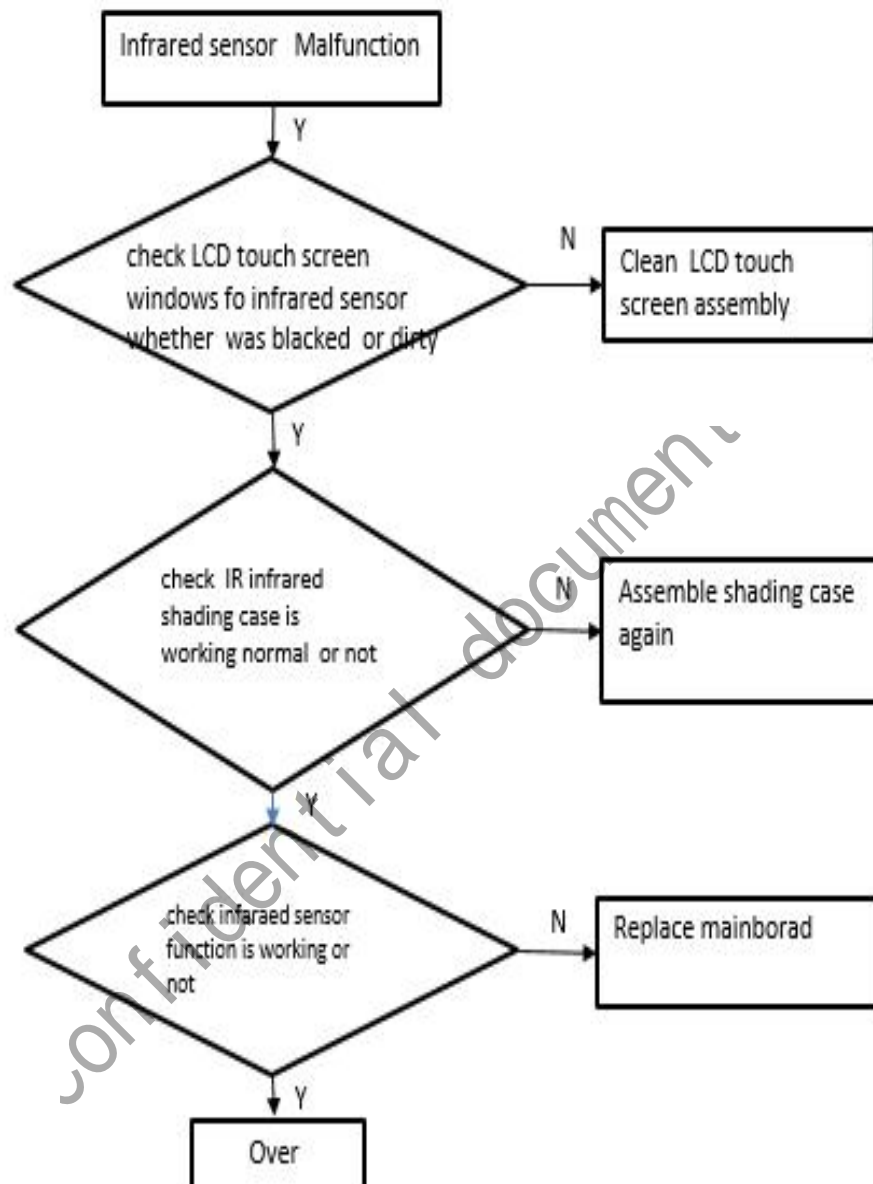
14. Fore Touch & finger print Malfunction



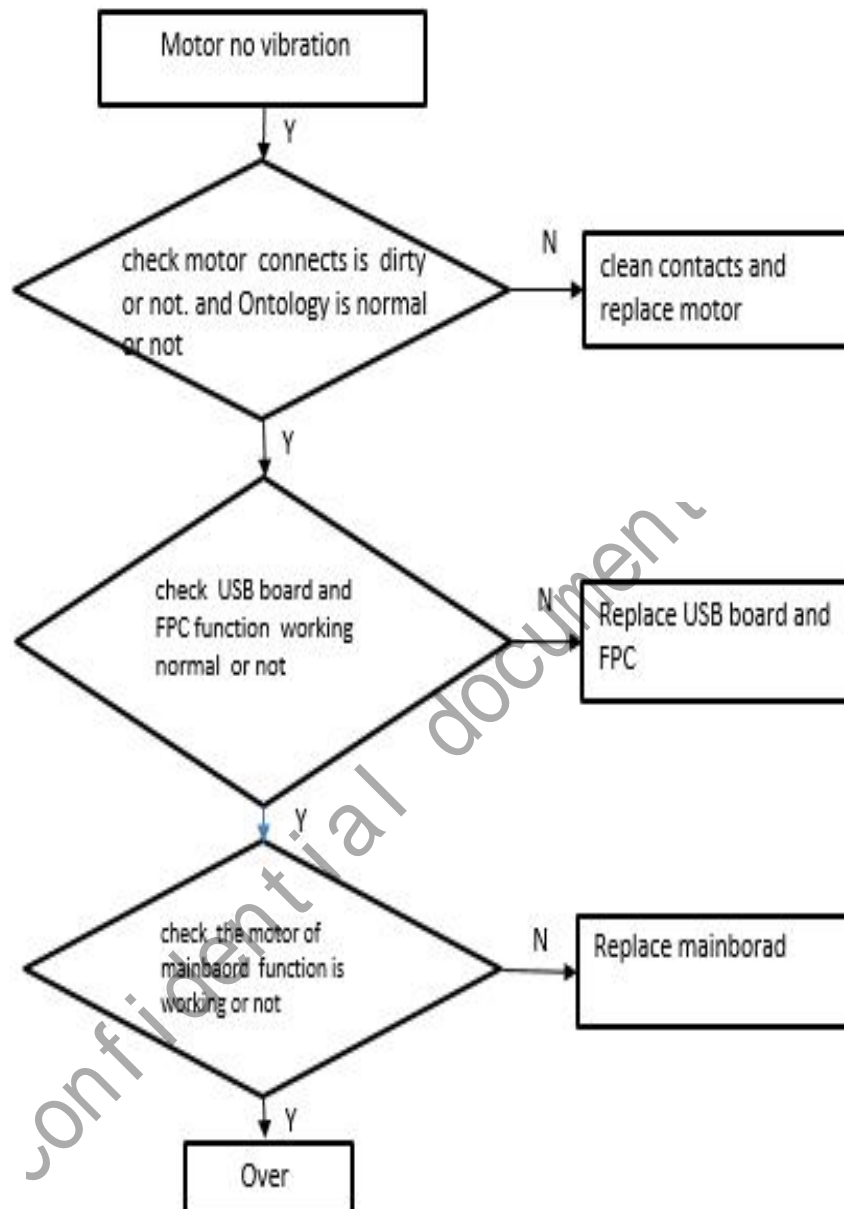
15. WIFI / Bluetooth / GPS Malfunction



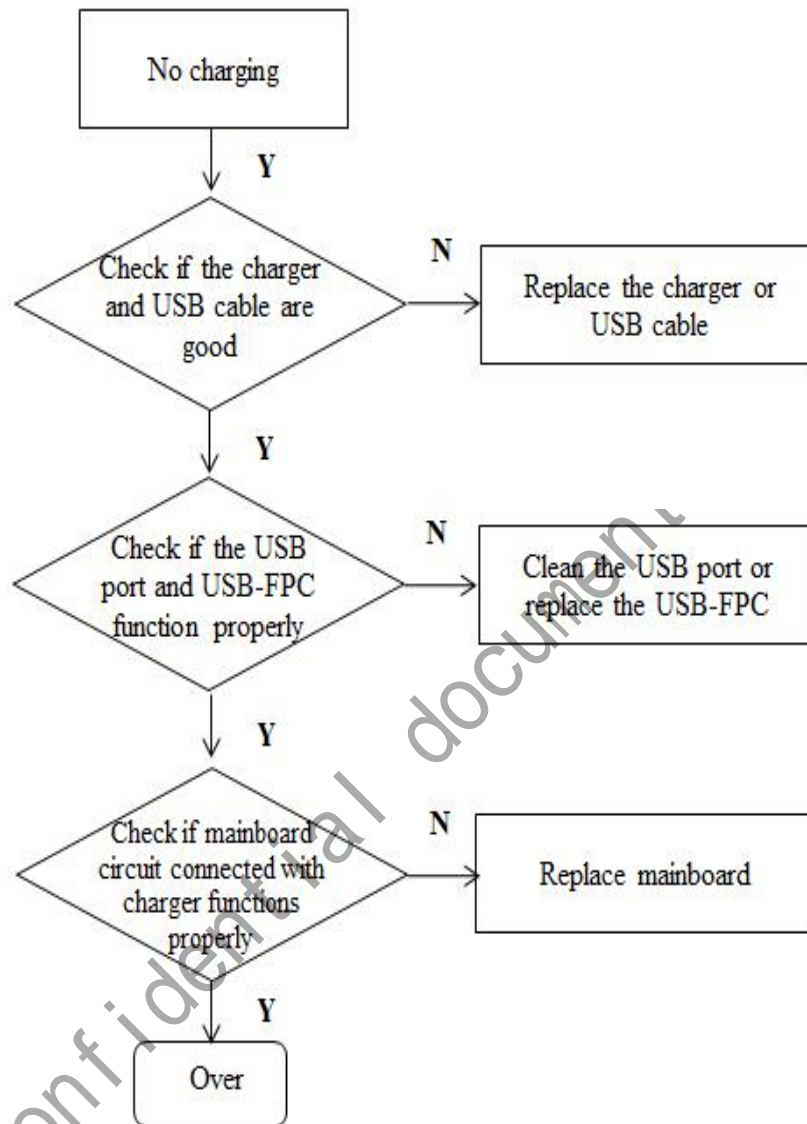
16. Infrared sensor Malfunction



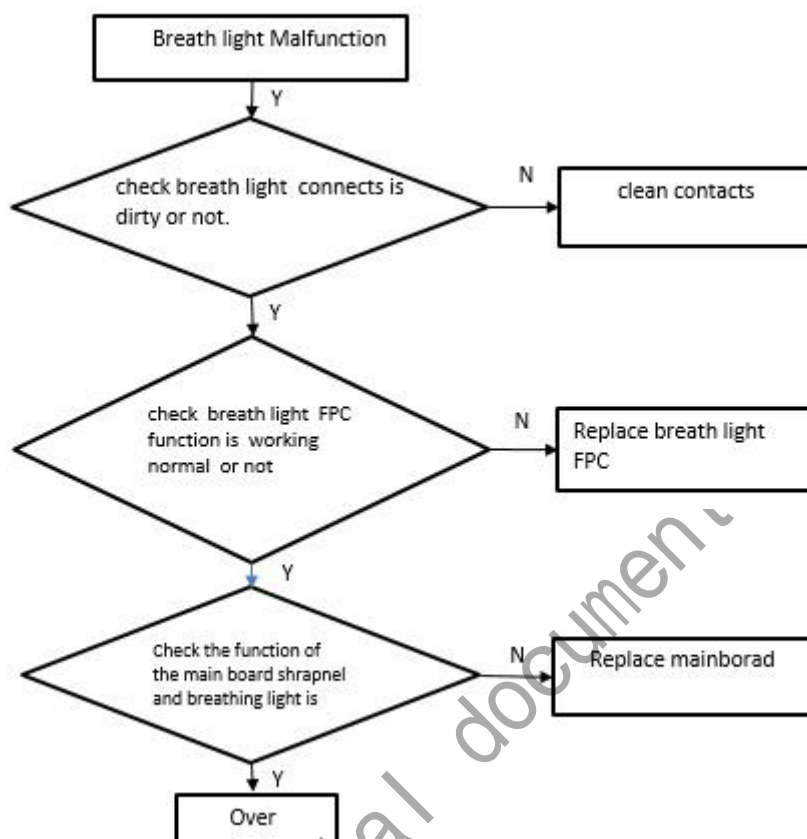
17. Motor Malfunction



18. Charger Malfunction



19. Breath light Malfunction



20. Sensor Malfunction

If you meet one of below issue and you can try to flash Flyme firmware again. If it's doesn't work. You can replace mainboard directly.:

Fault item	Maintenance step 1	Maintenance step 2
Gyroscope	Re-flash Flyme	Replace mainboard
Gravitational induction	Re-flash Flyme	Replace mainboard
Compass	Re-flash Flyme	Replace mainboard
Hall sensor	Re-flash Flyme	Replace mainboard