

珠海市魅族科技有限公司

MEIZU TECHNOLOGY CO., LTD.

广东省珠海市科技创新海岸魅族科技楼

MEIZU Tech Bldg., Technology & Innovation Coast,  
Zhuhai 519085, Guangdong, China

Tel /86-756-6116288  
Fax/86-756-6116200

File number: MZ-CSGY-03-0416

# M1971 Primary maintenance manual

(VERSION: V1.0)

Edit by : Rui Yan

Review by: ZhiFeng Zhong

Approve by: ChuanSan Wang

Publish date: April, 24th, 2019

Implement date: April, 24th, 2019

## Contents

M1971 Primary maintenance manual.....	1
Chapter 1 Caution of Maintenance.....	3
Chapter2 M1971 introduction.....	4
1. The appearance of M1971.....	4
2. The main components of cellphone.....	5
3. Technical specifications.....	6
Chapter3 Explode view.....	9
Chapter4 Common fault detection and maintenance.....	10
1. No boot issue.....	11
2. Recognized SIM Card Malfunction.....	14
3. Volume button Malfunction.....	15
4. Screen Touch Malfunction.....	16
5. OLED display Malfunction.....	17
6. Speaker Malfunction.....	18
7. Receiver Malfunction.....	19
8. Headset Malfunction.....	20
9. Main MIC and Sub MIC Malfunction.....	21
10. Rear camera and front camera Malfunction.....	22
11. Breath light Malfunction.....	23
12. Signal Malfunction.....	24
13. Finger print&Pressure induction Malfunction.....	25
15. WIFI / Bluetooth / GPS Malfunction.....	26
16. Infrared sensor Malfunction.....	27
17. Motor Malfunction.....	28
18. Charger Malfunction.....	29
19. Note: .....	30

## Chapter 1 Caution of Maintenance

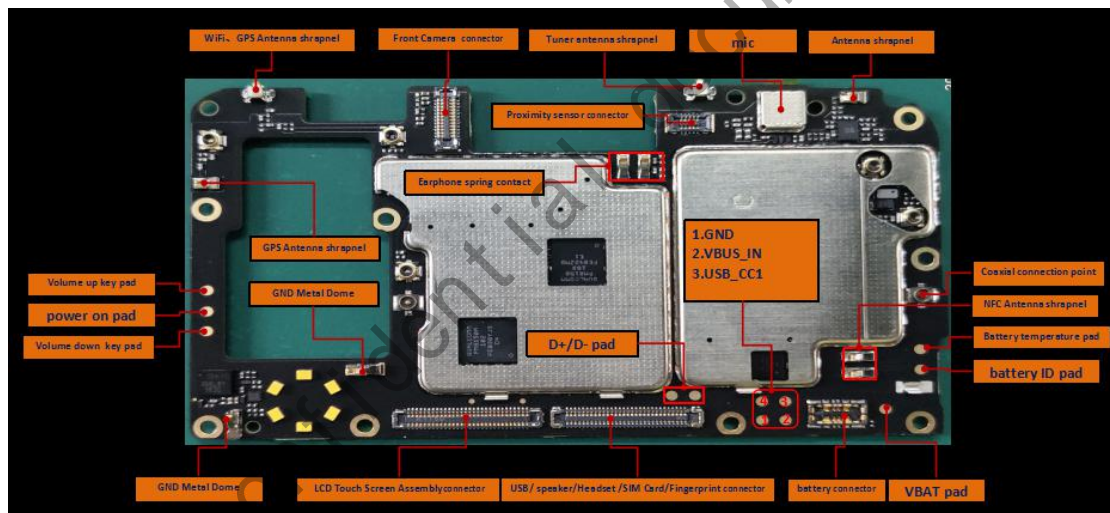
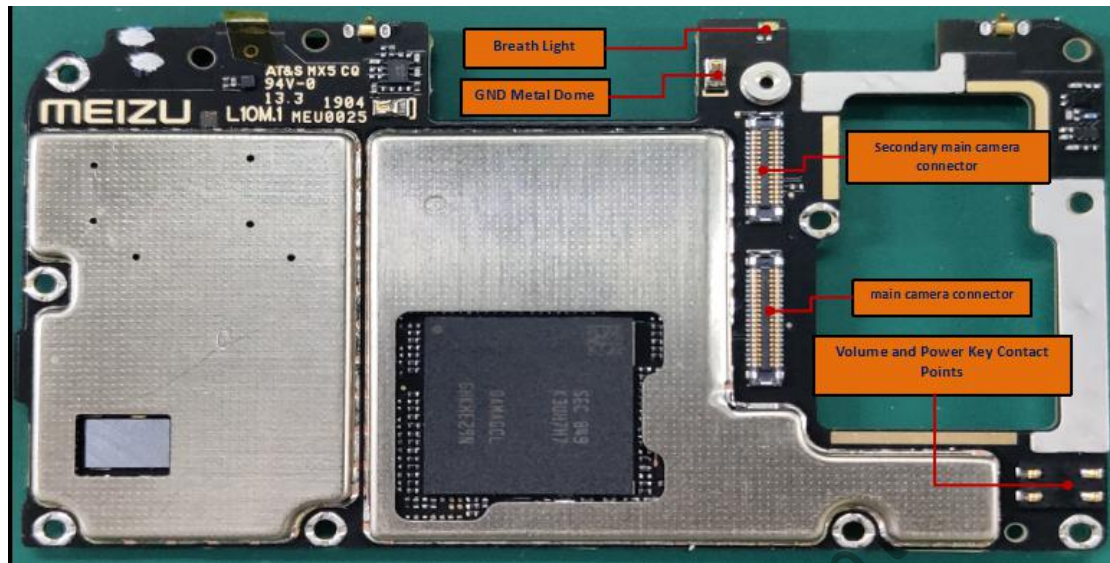
1. Only authorized technicians can do maintenance and calibration.
2. Make sure that engineers wear antistatic wrist strap repair phones in antistatic station.
3. Make sure that maintenance room is covered with antistatic mat, and the maintenance table is covered with antistatic material.
4. Make sure that all necessary screws and parts are installed in correct location of phone after maintenance and adjustment.
5. After maintenance, clean the PCBA.
6. As static electricity is the main reason for electronics damages, engineers shall repair phones in an anti-static environment and shall take effective antistatic protection measures.
7. For an occurrence of NG test, engineers should check if the test point is dirty or test point contact is poor.
8. Check if water penetrates to mainboard. If yes, check all the components to see if there is oxidation.
9. Make sure that maintenance room is bright and has natural ventilation. Ventilation: When do maintenance or soldering, some equipment can emit hazardous gas. So the maintenance room should have good natural ventilation. If there are no windows in maintenance room, the room should be equipped with electric air regenerating equipment.
10. There should be obvious antistatic labels in Electrostatic Sensitive area, such as in maintenance area and spare part warehouse.

## Chapter2 The introduction of M1971

### 1. The appearance of M1971



## 2.The main components of cellphone :



## 3.Technical specifications

<b>Product overview</b>	<b>Product model</b>	16s
	<b>Item name</b>	M1971
	<b>Operating system</b>	Flyme7.9 (base on Android P)

		<b>Band</b>	<b>model</b>	<b>SN prefix</b>
<b>version and standard</b>	<b>Oversea version</b>	GSM: B2/B3/B5/B8 WCDMA: B1/B2/B4/B5/B8 CDMA: BC0 TD-LTE: B40 FDD-LTE: B1/B2/B3/B4/B5/B7/B8/B20	M971H	971H
<b>whole unit Size</b>	151.9*73.4*7.65mm			
<b>whole unit Weight</b>	165g			
<b>Color</b>	Black、 white、 Gradient blue			
<b>ID technology</b>	Bright metal middle frame + 3D Glass back cover			
<b>SIM card</b>	Deal nano card			
<b>Brand</b>	QUALCOMM			
<b>model</b>	Qualcomm Snapdragon 8150			
<b>process</b>	7nm			
<b>Frequency</b>	The highest can reach 2.8GHz			
<b>GPU</b>	Adreno 640			
<b>Framework</b>	4x2.8GHz Gold + 4x1.7GHz Silver			
<b>RAM</b>	6GB/8GB DDR4X			
<b>ROM</b>	128GB UFS 2.1			
<b>Storage combination</b>	6+128GB, 8+128GB			
<b>Storage card</b>	Not support			
<b>Package method</b>	POP			
<b>TP</b>	TP type	2.5D glass		
	TP function	Black Gesture unlock / Wet hand operation / Glove handling/10 点 touch/Edge preventing mistakenly touch		
	TP technology	On-cell, Anti-fingerprint coating		
<b>LCM</b>	LCM size	6.15" FHD+ 18:9 Hard screen, R angle Cutting		
	Display technique	AMOLED		
	Resolution	2232*1080		
	Chromatic number	16.7M		
	Brightness	430nit		
	Visual angle	ALL viewing angle display		
	PPI	403ppi		

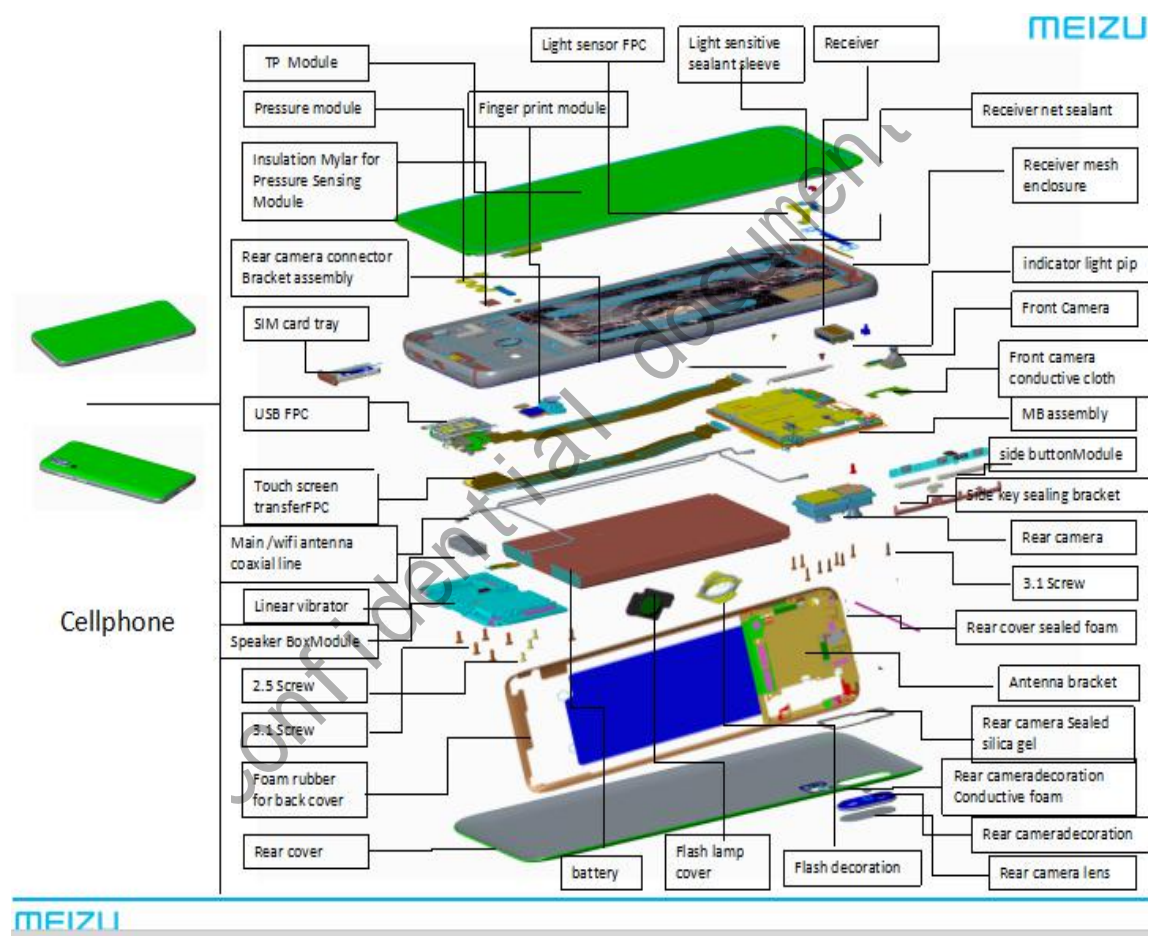
	Contrast	100000:1
	Raise to wake	Support
	Always OnDisplay	Support
<b>Rear camera</b>	Pixel	48M+20M
	Sensor	IMX 586+OIS+IMX 350
	Camera Lens	SUNNY 39176B
	Aperture	F1.7+F2.6
	Optical anti shake	Support
	Autofocus	AF
	Focusing mode	Phase focus、 Laser focus
	ISP	Inside
	Flash light	6LED flash light ring
	Camera lens	Glass lenses
<b>Front camera</b>	Pixel	20M
	Sensor	Samsung 3T2 (20M, 0.8um)
	Lens	SUNNY 3972A
	Aperture	F2.2
	Optical anti shake	Not support
	Face recognition	Support
	Auto focusing	FF
	Focusing method	N/A
	ISP	Inside
Flash light	Not support	
<b>Battery capacity</b>	3600mAh (type) ,3540mAh (min)	
<b>mCharge</b>	1.2C/0.7C Step charging	
<b>Battery energy density</b>	668	
<b>PMU</b>	PM855B+SMB1390	
<b>Fuel gage</b>	Qualcomm built-in solution	
<b>Charger</b>	Qualcomm built-in solution	
<b>specification</b>	UP0830S	
<b>protocol</b>	PE+	
<b>HIFI</b>	Not support	
<b>Smart PA</b>	Support	CS35L41
<b>Noise reduction algorithm</b>	Support	Spec timbre
<b>Audio chip</b>	Support	
<b>speaker</b>	1217 Superlinear	
<b>Receiver</b>	0815	
<b>MIC</b>	Dual MIC	

<b>Fingerprint recognition</b>	Live detection	Not support
	Payment authentication	Wechat pay&Alipay
	Heart rate detection	Not support
<b>Acceleration of gravity</b>	Support	
<b>Gyroscope</b>	Support	
<b>Distance sensor</b>	Support	
<b>Light sensor</b>	Support	
<b>Electronic compass</b>	Support	
<b>Holzer</b>	No Support	
<b>Applicable frequency</b>	700-2700MHZ	
<b>WLAN</b>	Support 2.4G/5G WIFI; 802.11a/b/g/n/ac; Support 2*2MIMO	
<b>Bluetooth</b>	Support BT5.0	
<b>GPS</b>	GPS/Glonass/beidou	
<b>Call and standby</b>	Dual sim card dual standby single pass	
<b>VoLTE</b>	Support	
<b>RF</b>	SDR855	
<b>NFC</b>	Support	
<b>Motor</b>	0619 Horizontal Linear Motor	
<b>Pedometer</b>	Support	
<b>Breathing light</b>	Support	
<b>FM</b>	Not support	
<b>Main antenna and Vice antenna switching</b>	Support	
<b>Waterproof / dust-proof</b>	Not support	
<b>OTG</b>	support	
<b>USB data port</b>	Type C 2.0	
<b>Headset port</b>	Not support	
<b>Audio format</b>	flac、ape、aAc、mka、ogg、mp3、midi、m4a、amr、wav (ra、wma)	
<b>Audio encoding format</b>	FLAC、APE、DTS、AC3、OGG、AAC、ADPCM、ALAC、MP3、AMR—WB、AMR—NB (COOK、ATRC)	
<b>Video format</b>	mp4、3gp、mov、mkv、avi、flv、mpeg、m2ts、ts (wmv、asf、rm、rmvb)	



<b>Video encoding format</b>	H264、MPEG4、VC1、H263、MPEG1、MPEG2、VP8 (XVID、DIVX5、DIVX4、DIVX3、VP6、WMV1、WMV2、WMV3、RV10、RV20、RV30、RV40)
<b>Picture format</b>	JPEG、PNG、GIF、BMP

## Chapter3 Explode view

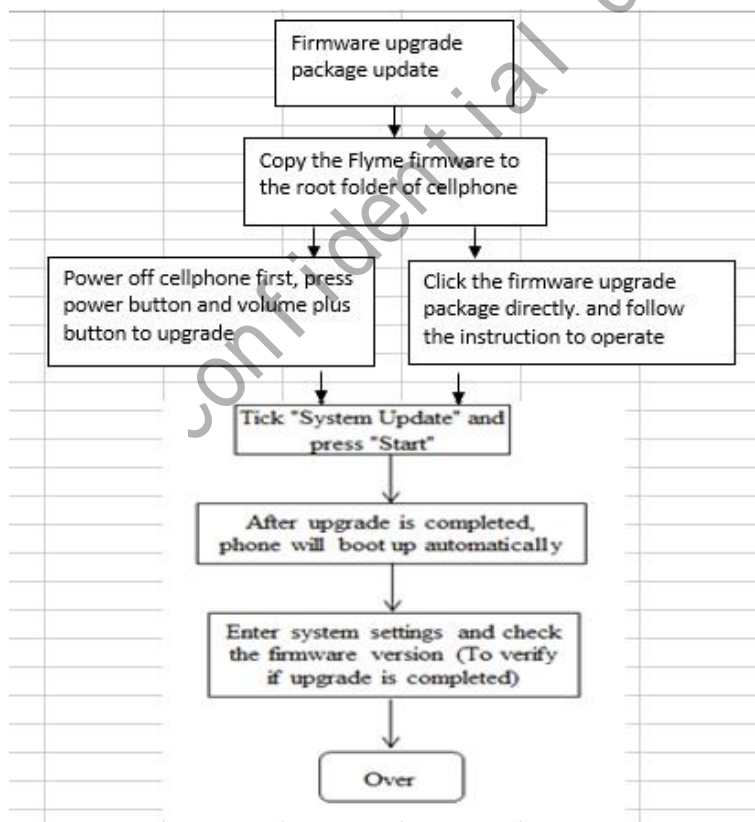


## Chapter4 Common fault detection and maintenance

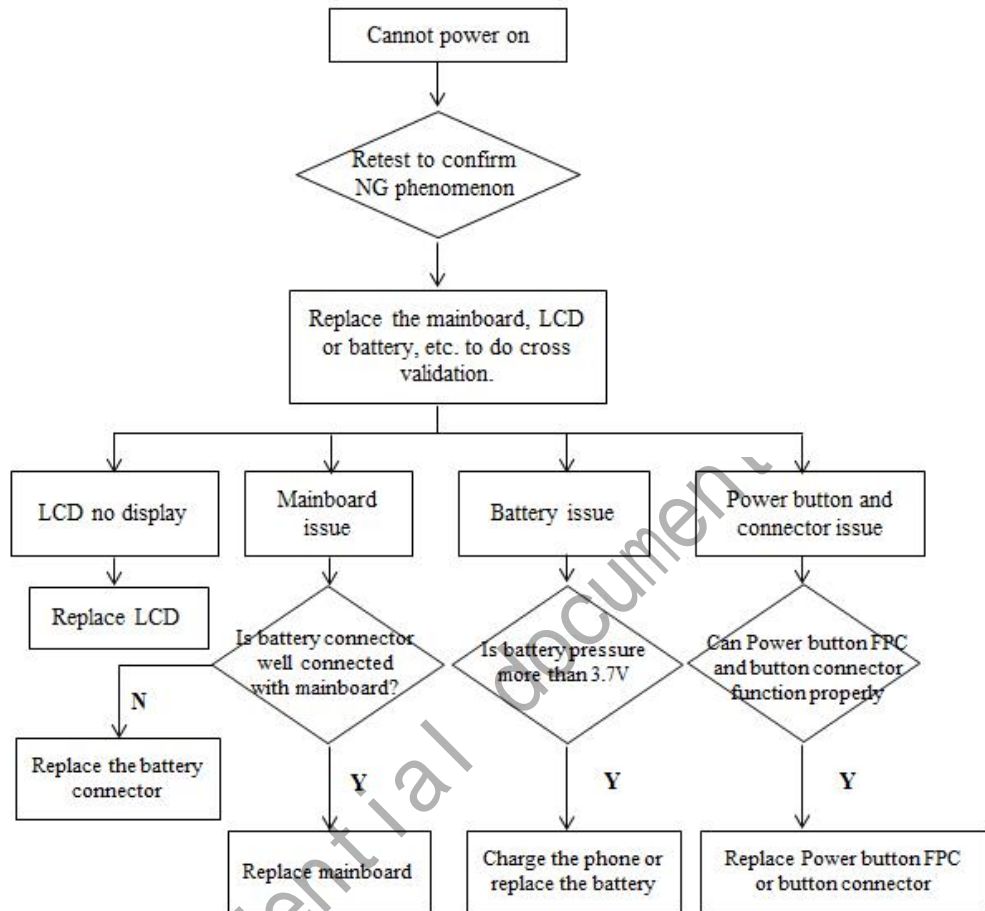
For poor functional machines, the problem of software should be eliminated first. And then investigation of hardware failures. Software upgrade should be follow below step:

### Firmware update

If the phone is flashed to Flyme firmware once again and the current problem still can't be solved, Please flash the phone to Engineer firmware (Refer to M1971 Upgrade Guide). Then use the test software carried by phone to do further tests to troubleshoot.



## 1. No boot issue



- a. Press the power button +volume down button at the same time, cellphone will auto access fastboot mode. As below picture

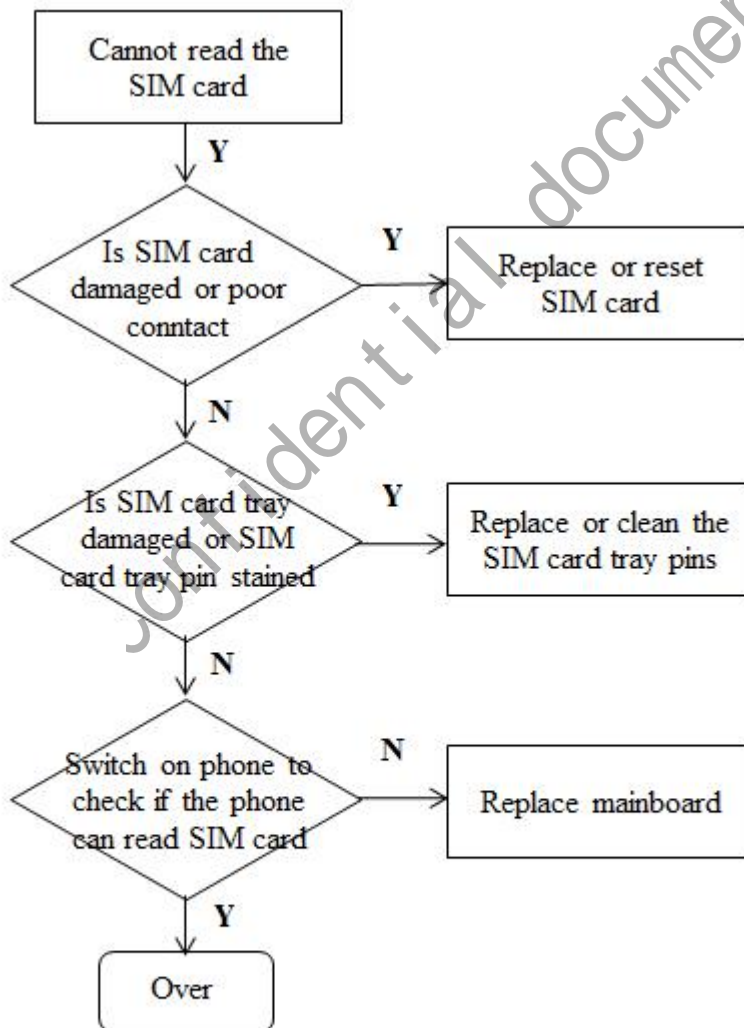


b. Press the power button + volume plus button at the same time. Cellphone will access Recovery mode

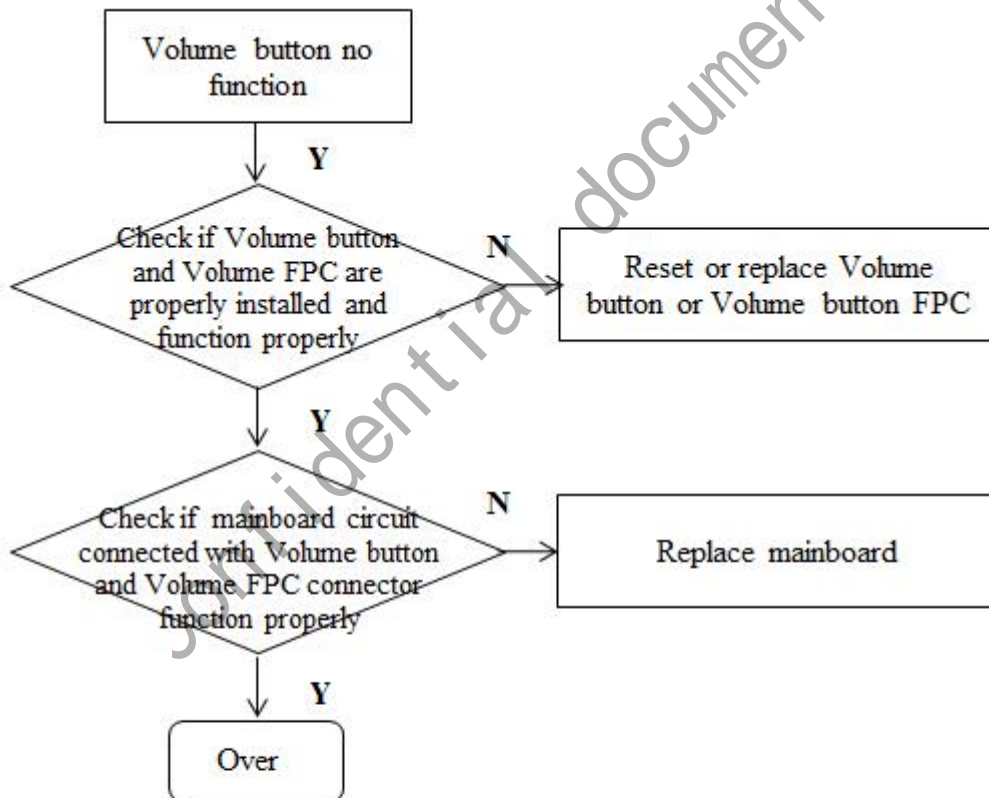
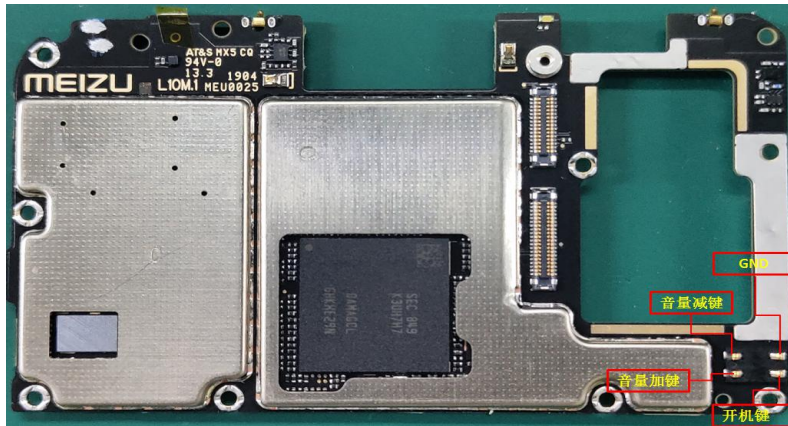


c. Press volume plus, volume down and power button at the same time. the cellphone will access the USB download mode. **note: the cellphone will not show anything at this moment. You need to press the power button about 10s. and then the cellphone will boot up.**

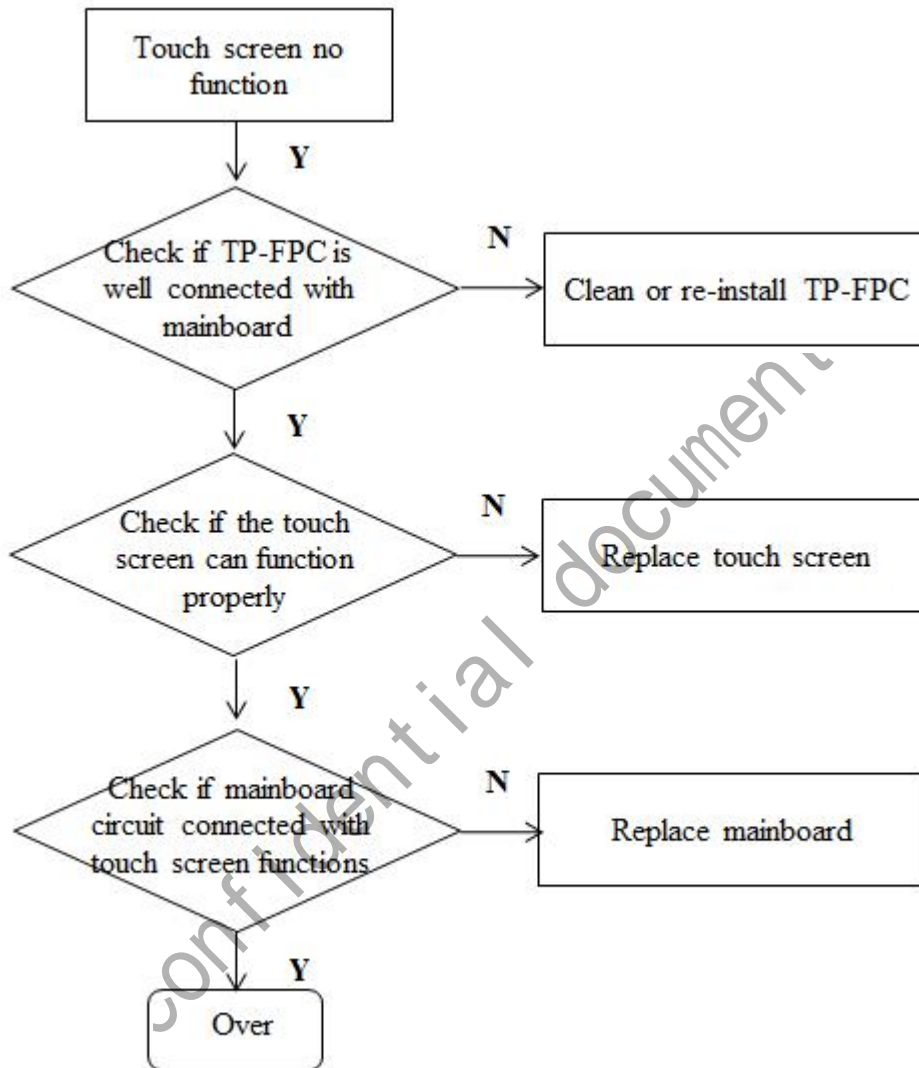
## 2. Recognized SIM Card Malfunction



### 3. Volume button Malfunction

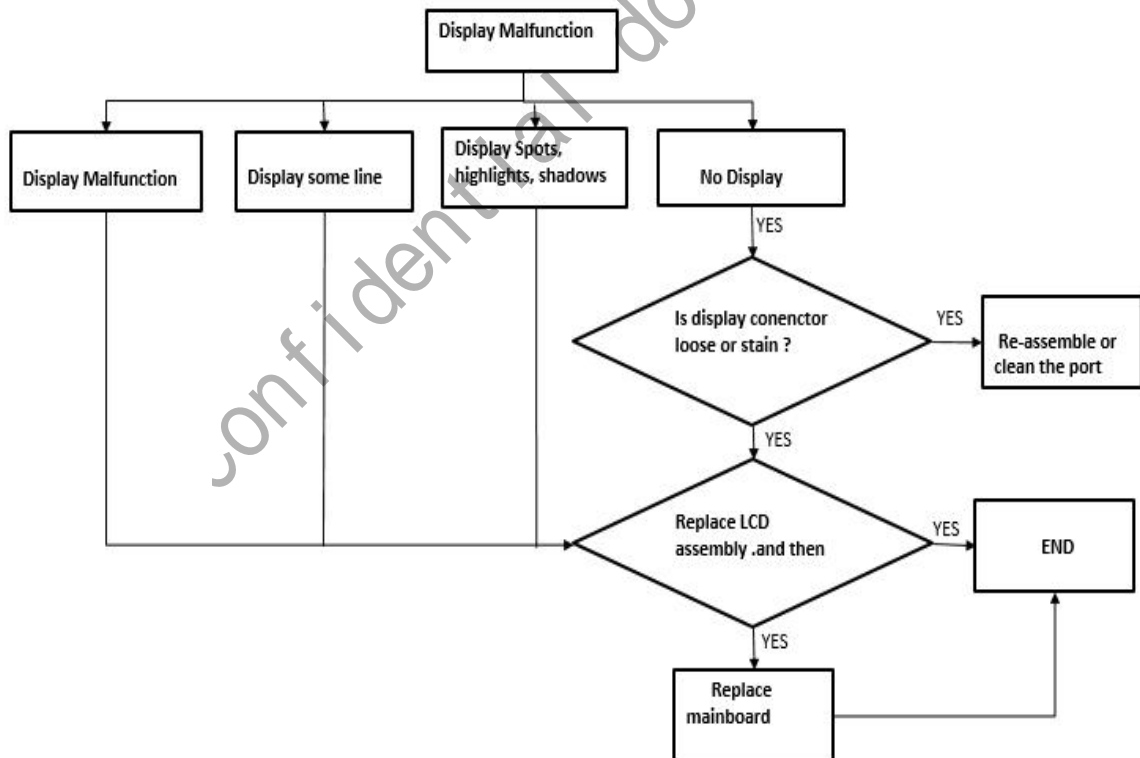


## 4. Screen Touch Malfunction

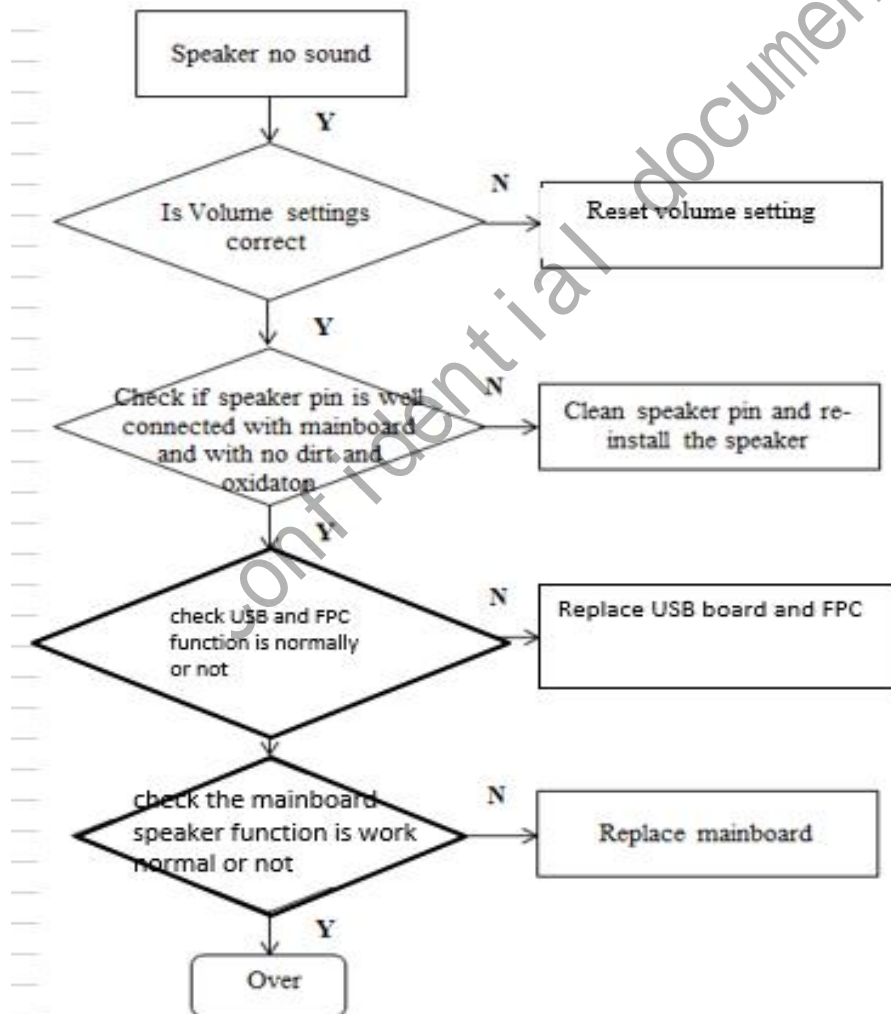
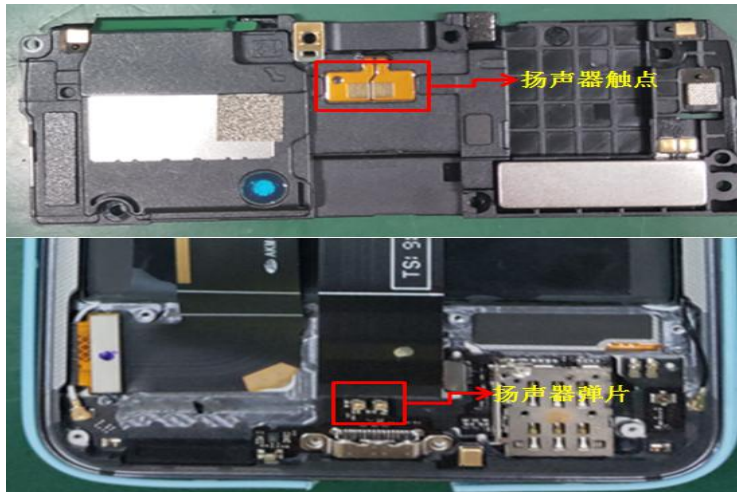




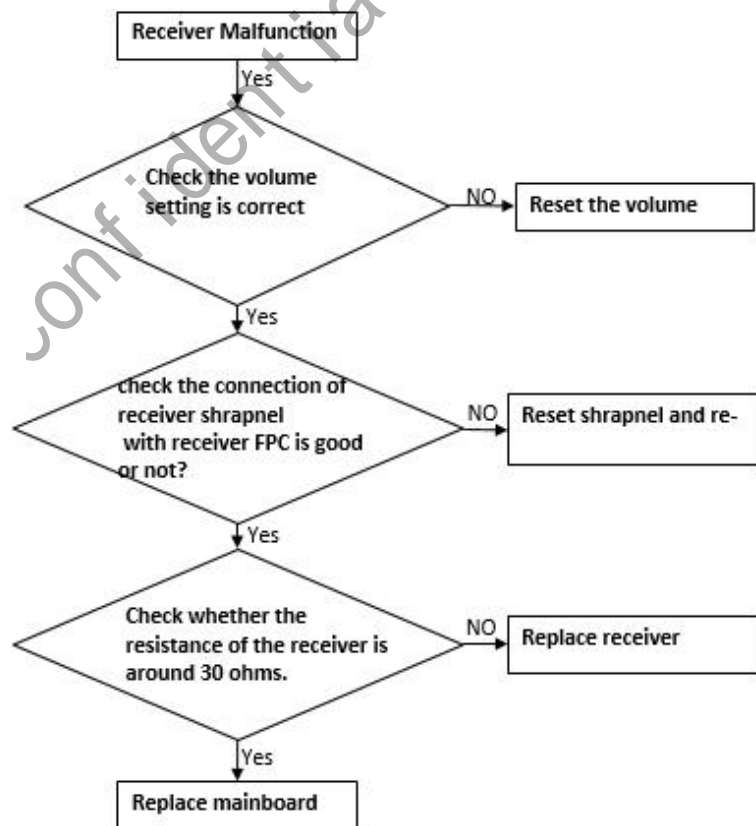
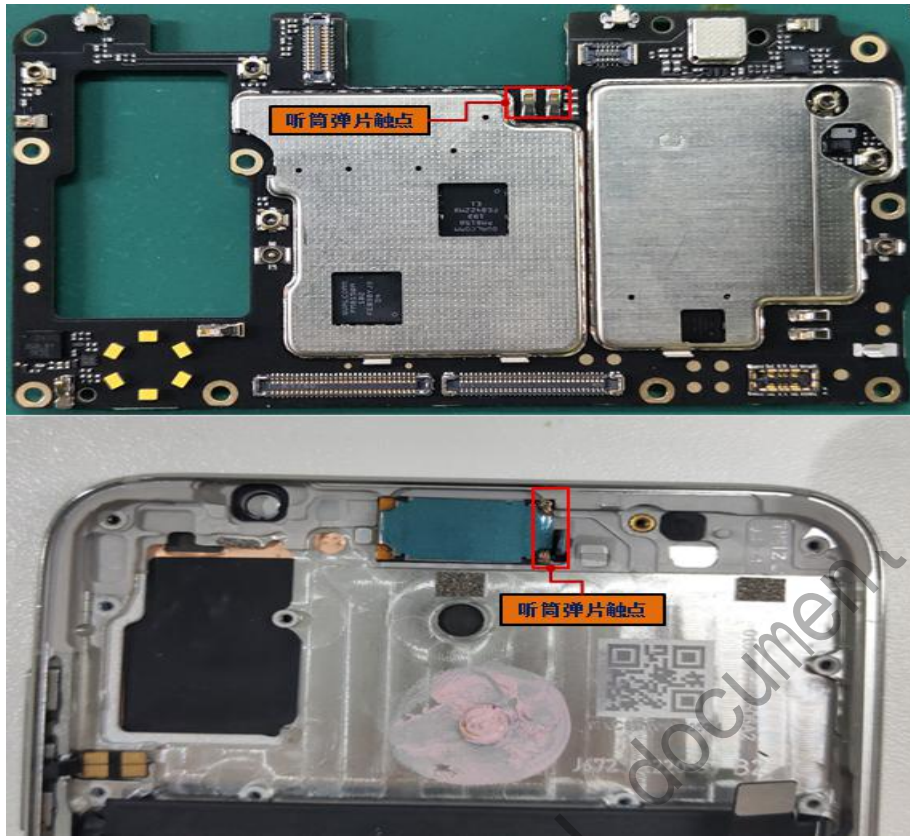
## 5.OLED display Malfunction



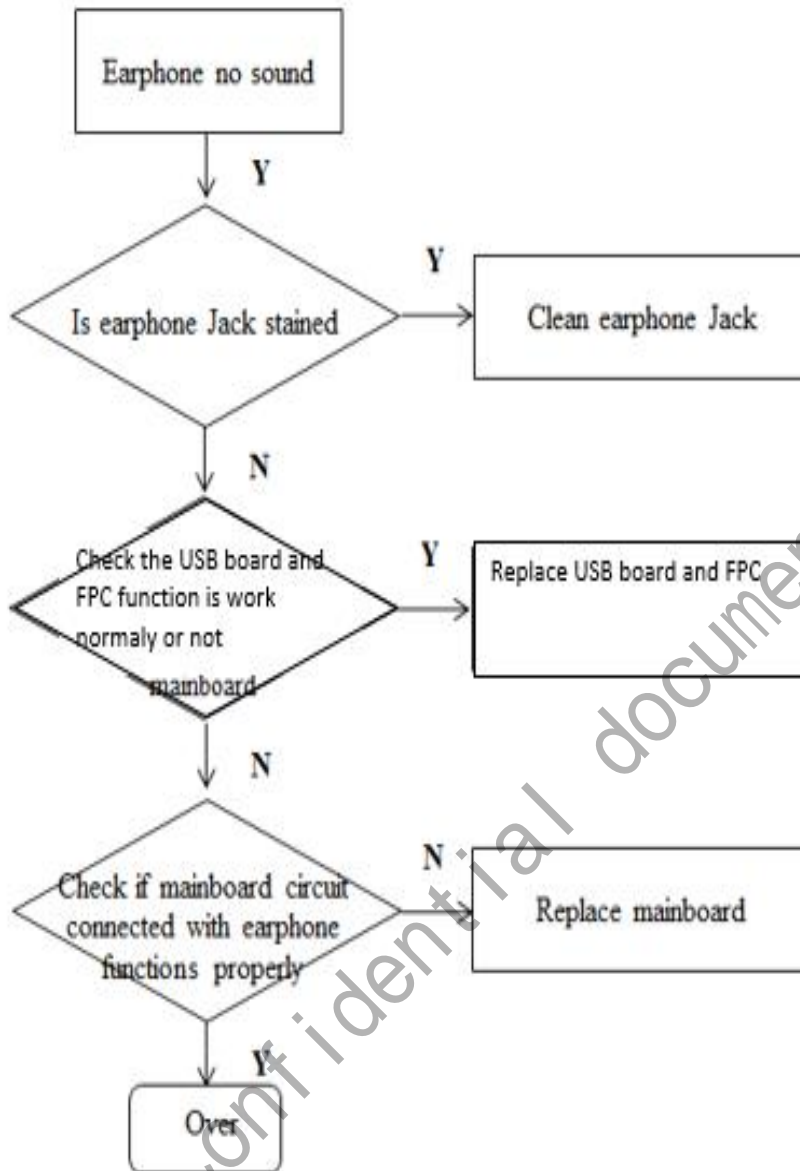
## 6. Speaker Malfunction



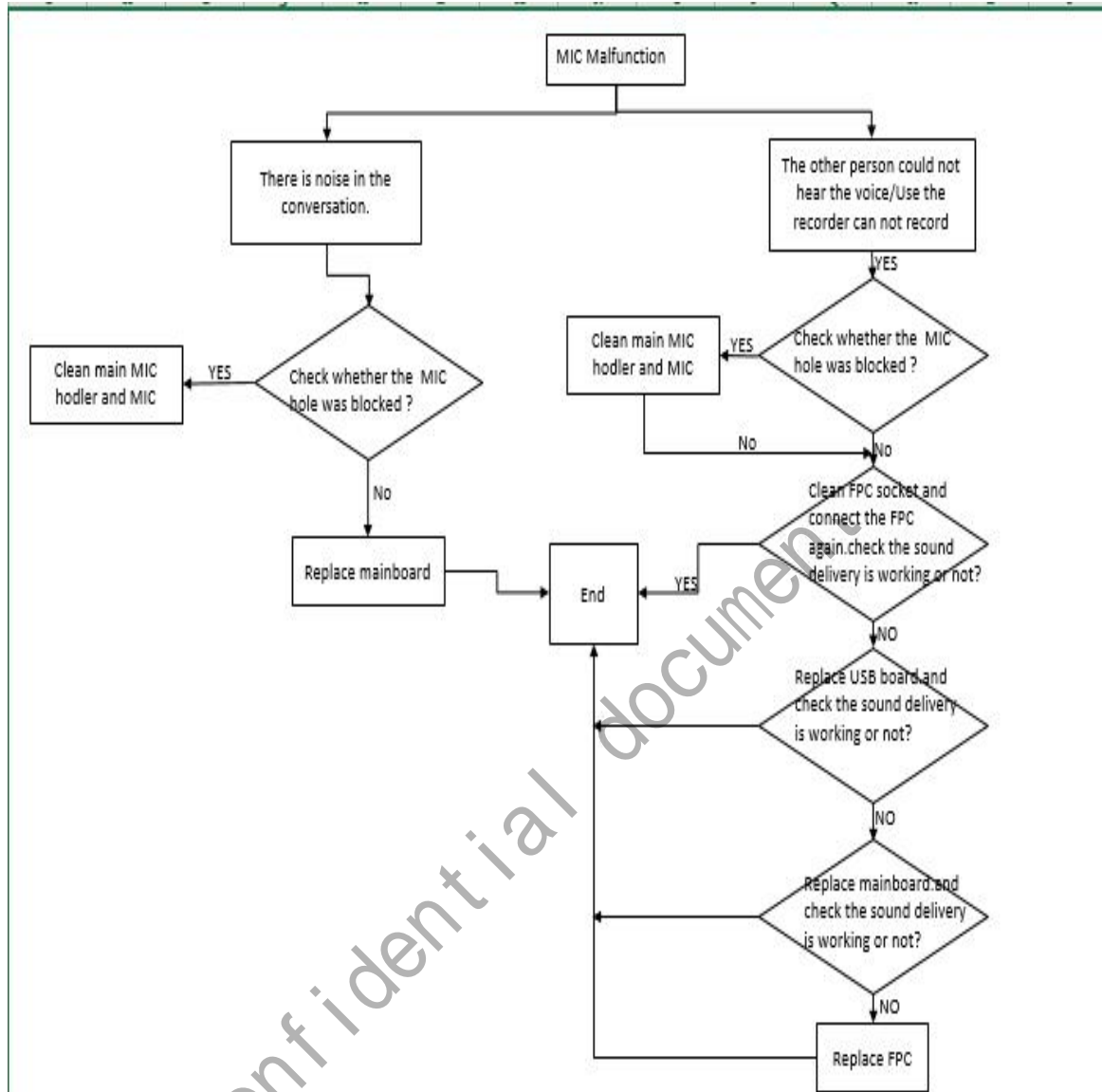
## 7.Receiver Malfunction



## 8. Headset Malfunction

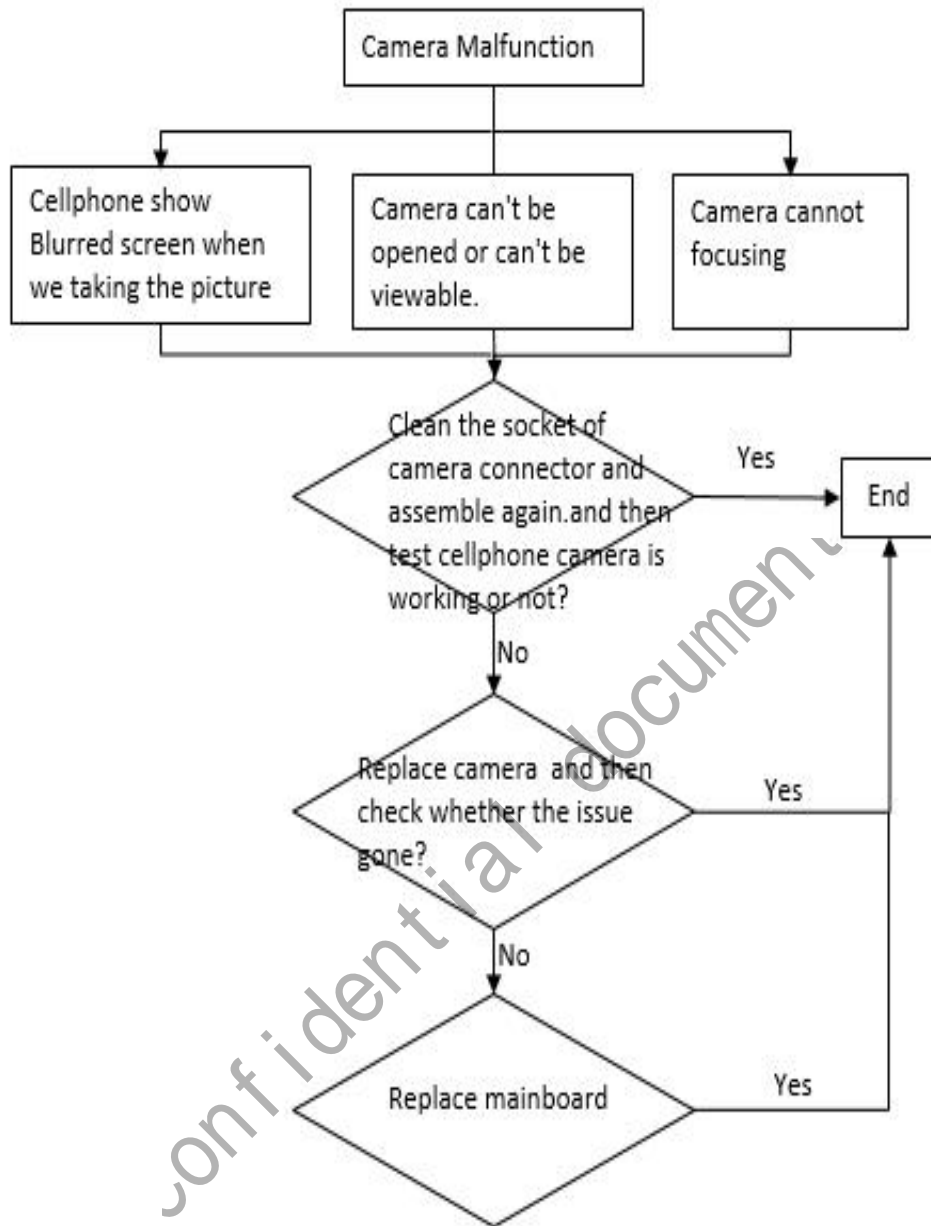


## 9. Main MIC and Sub MIC Malfunction

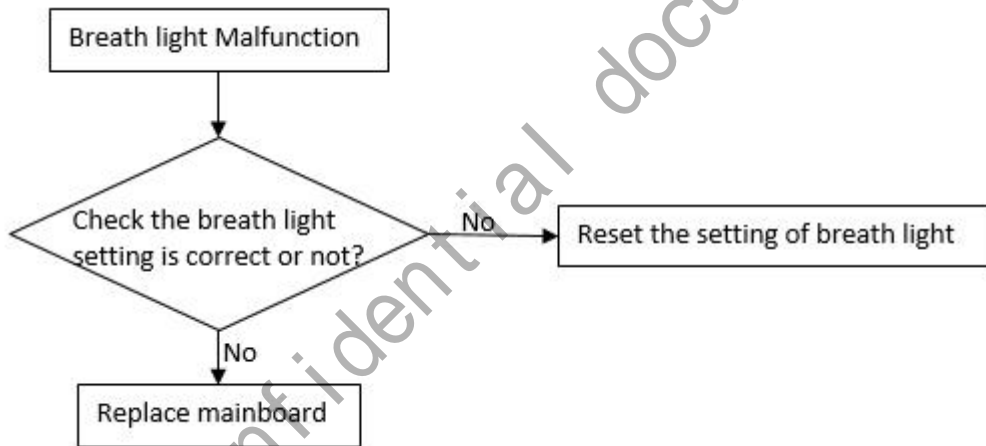
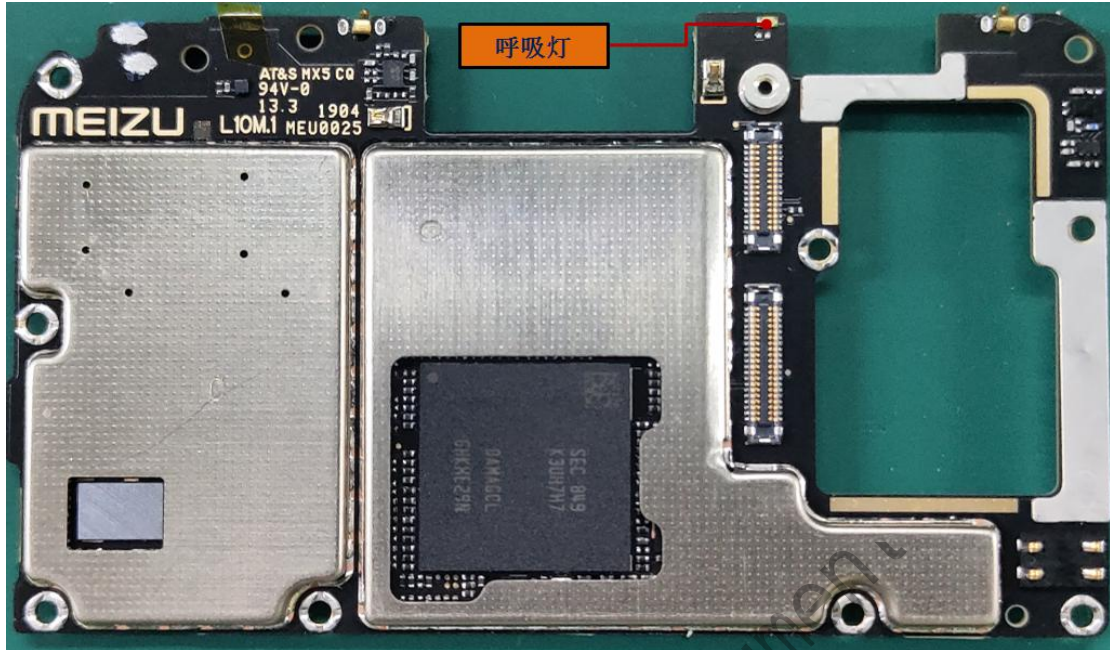


Confidential document

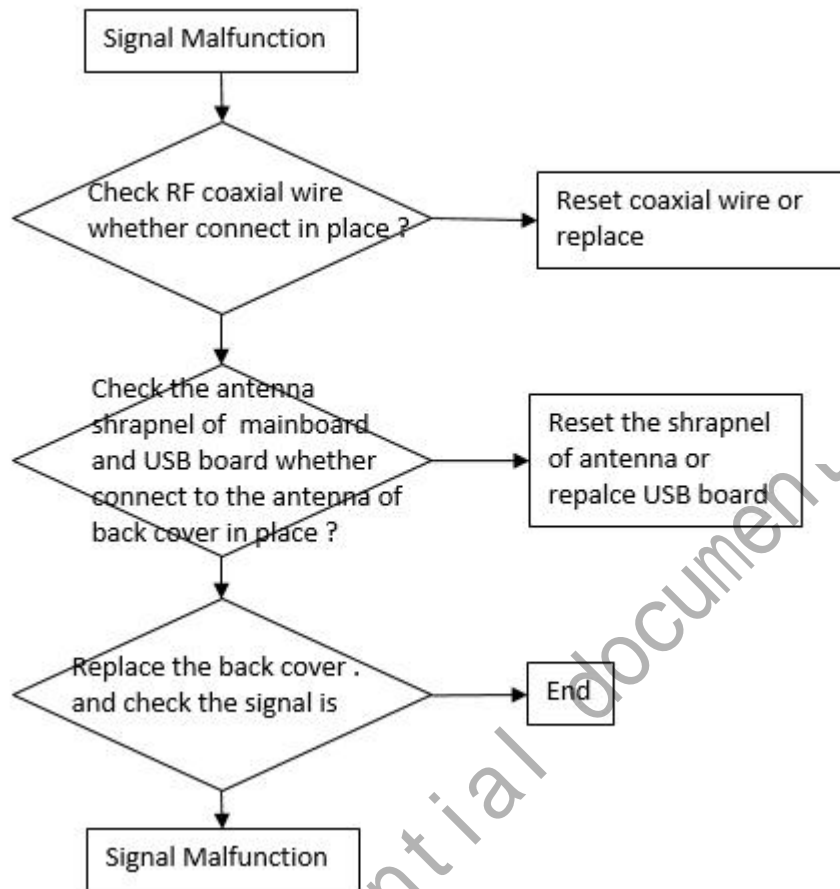
## 10. Rear camera and front camera Malfunction



## 11. Breath light Malfunction



## 12.Signal Malfunction



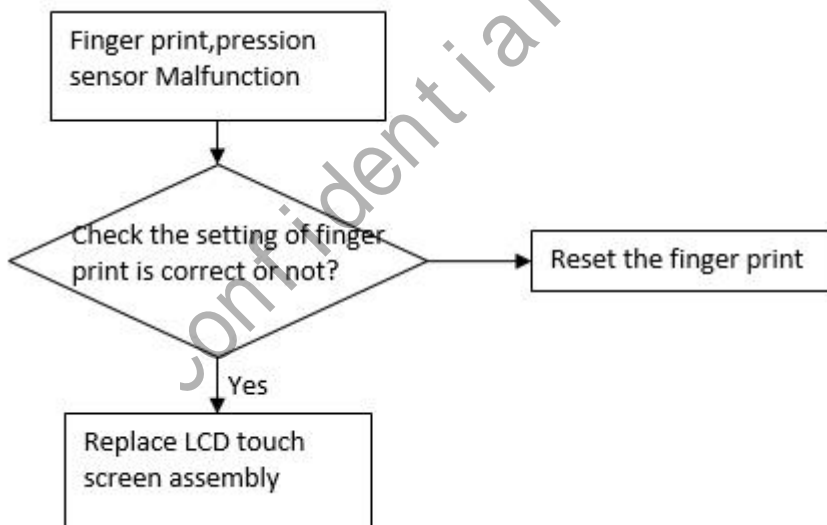
Confidential document



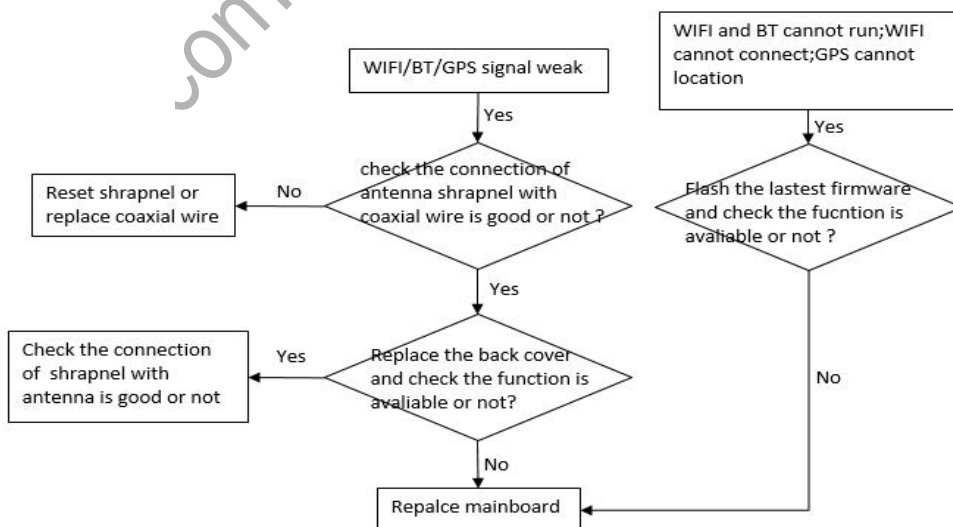
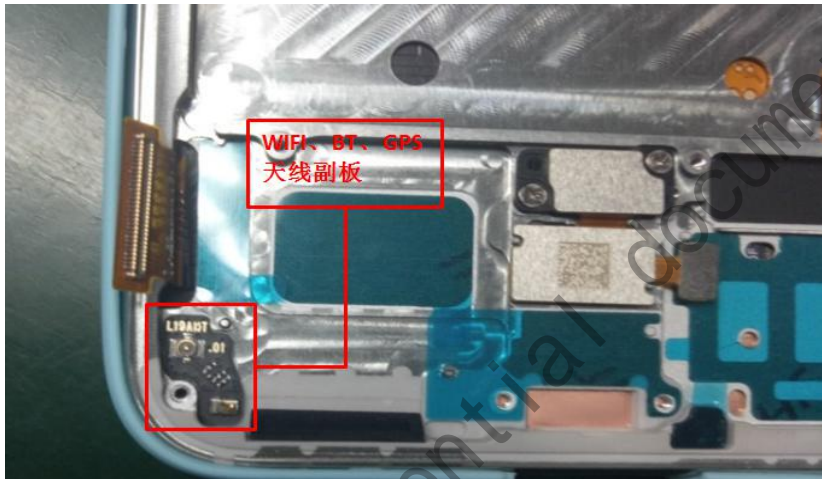
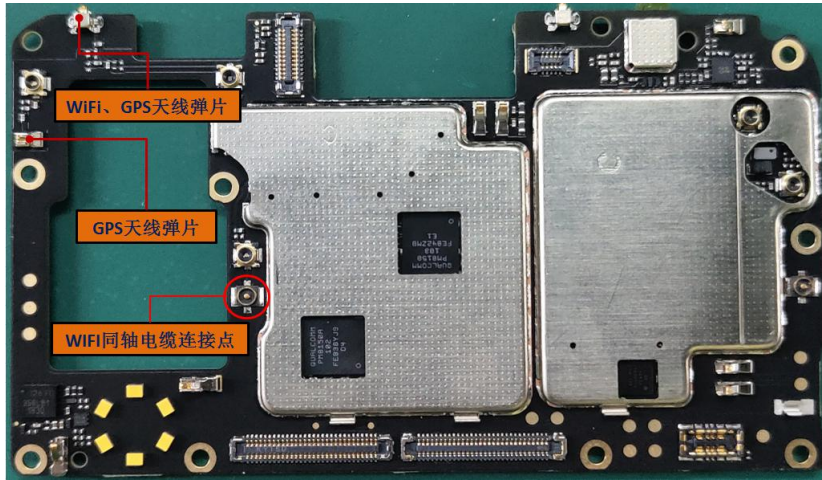
### 13. Finger print& Pressure induction Malfunction



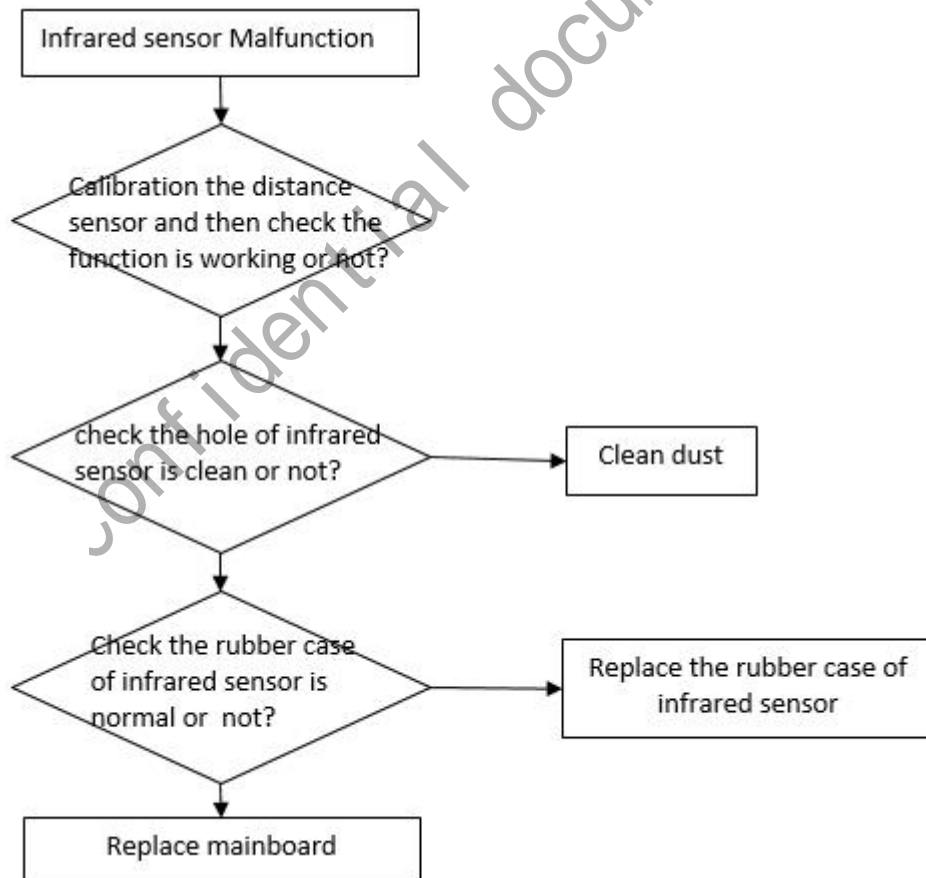
Fingerprint and pressure sensor are integrated into the LCD touch screen assembly.



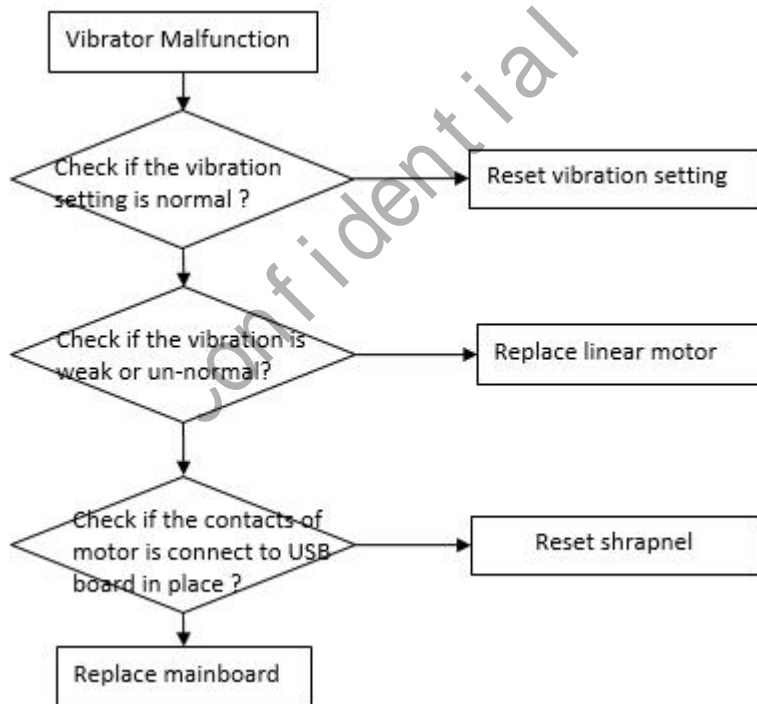
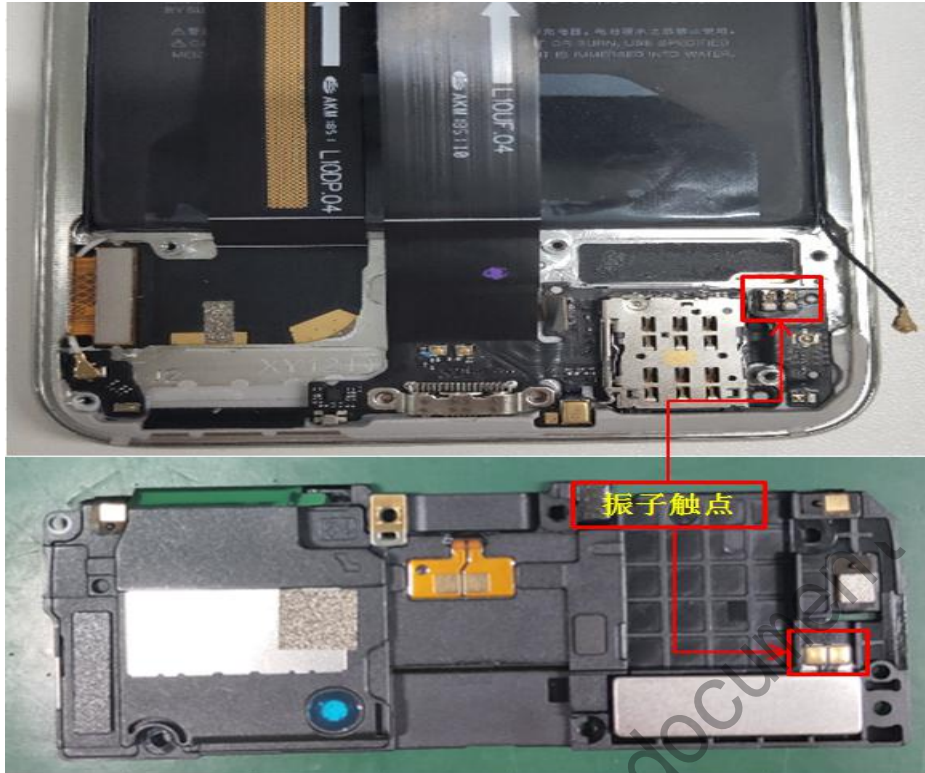
## 14. WIFI / Bluetooth / GPS Malfunction



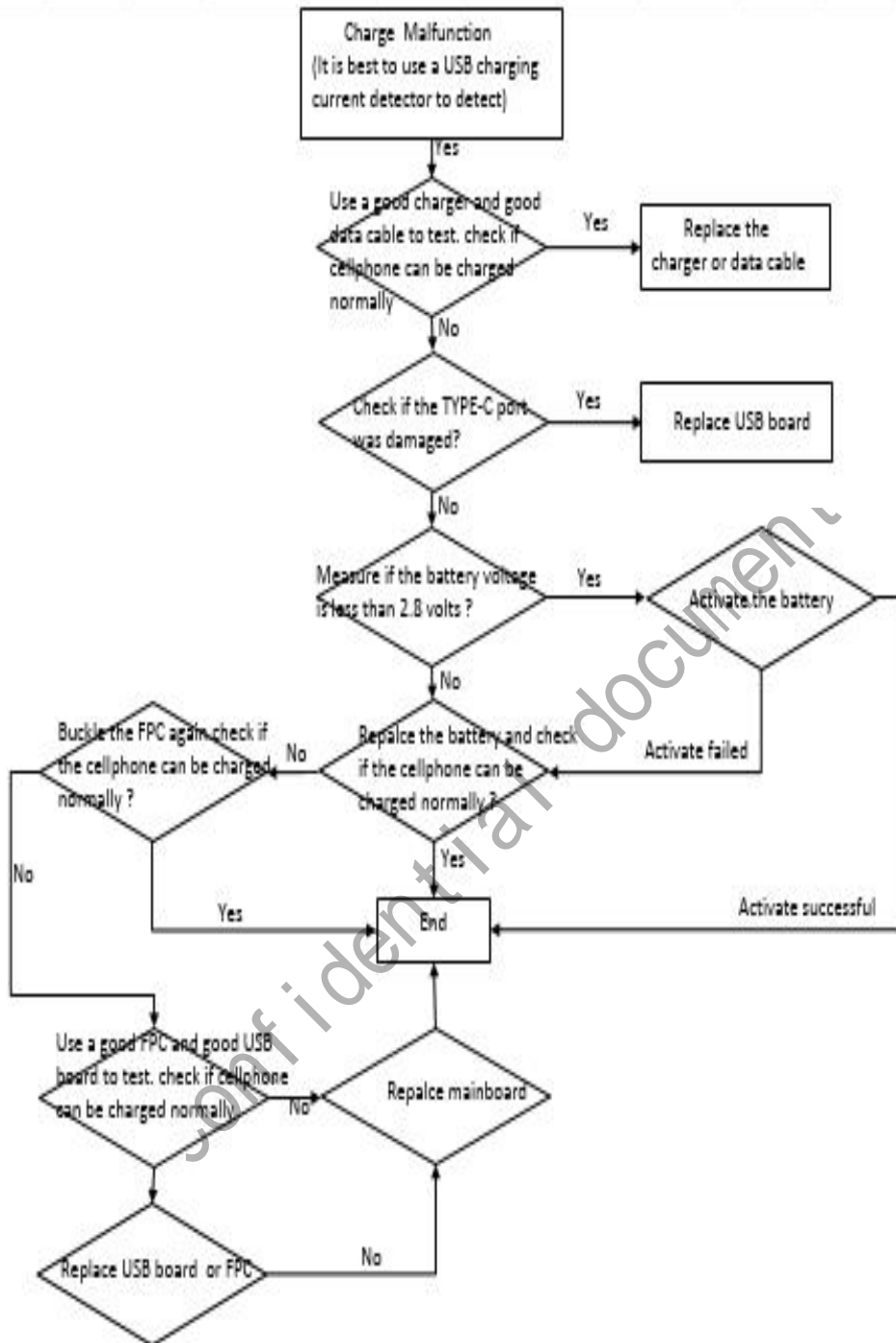
## 15. Infrared sensor Malfunction



## 16. Motor Malfunction



## 17. Charge Malfunction



## 18.Note:

If you meet one of below issue and you can try to flash Flyme firmware again. If it's doesn't work. You can replace mainboard directly.:

Fault item	Maintenance step 1	Maintenance step 2
Gyroscope	Re-flash Flyme	Replace mainboard
Gravitational induction	Re-flash Flyme	Replace mainboard
Compass	Re-flash Flyme	Replace mainboard
Hall sensor	Re-flash Flyme	Replace mainboard

confidential document