

Line	ChildItem	Name1	Specification1	Qty	Remarks2
1	CBC-0603-102-C	0603 SMD Capacitance	0603 102K 5%	12	C15.C22.C24.C25.C26.C27.C62.C63.C78.C100.C113.C114
3	CBC-0603-103	0603 SMD Capacitance	0603 103K 5% CLIOB103KB8NNNC	8	C1.C4.C9.C13.C19.C31.C77.C80
5	CBC-0603-104-C	0603 SMD Capacitance	0603 104K 5%	39	C5.C12.C17.C18.C21.C23.C28.C29.C30.C34.C35.C36.C37.C40.C41.C43.C44.C49.C50.C51.C52.C65.C66.C69.C73.C74.C76.C83.C84.C85.C86.C87.C88.C90.C97.C99.C103.C104.C105
7	CBC-0603-16-1U	0603 SMD Capacitance	0603 1UF/16V ±10% 4k/REEL	1	C20
9	CBC-0603-152	0603 SMD Capacitance	0603 152K 5% CLIOB152KB8NNNC	2	C39.C48
11	CBC-0603-153	0603 SMD Capacitance	0603 153K 5% CLIOB153KB8NNNC	2	C60.C64
13	CBC-0603-20P	0603 SMD Capacitance	0603 20P 5% CLIOC200JB8NNNC	2	C81.C92
15	CBC-0603-203	0603 SMD Capacitance	0603 203K 10% CLIOB203KB8NNNC	1	C93
17	CBC-0603-220P	0603 SMD Capacitance	0603 220P 5%	1	C102
19	CBC-0603-222	0603 SMD Capacitance	0603 222K 10%	1	C75
21	CBC-0603-223-G	0603 SMD Capacitance	0603 223K 10%	7	C2.C3.C70.C71.C72.C95.C96
23	CBC-0603-272	0603 SMD Capacitance	0603 272P 10% CLIOB272B8NNNC	4	C45.C46.C58.C89
25	CBC-0603-27P	0603 SMD Capacitance	0603 27P 5% CLIOC270JB8NNNC	2	C16.C59
27	CBC-0603-30P	0603 SMD Capacitance	0603 30P 5% CLIOC300JB8NNNC	4	C6.C8.C10.C11
29	CBC-0603-474	0603 SMD Capacitance	0603 474K 10% CLIOB474KO8NNNC	1	E28
31	CBC-0603-560P	0603 SMD Capacitance	0603 561P 10% CLIOB561KB8NNNC	1	C14
33	CBC-0603-682	0603 SMD Capacitance	0603 682P 10% CLIOB682KB8NNNC	2	C67.C68
35	CBC-0603-68P	0603 SMD Capacitance	0603 68P 10% CLIOC680JB8NNNC	2	C55.C56
37	CBC-0805-16-2.2U	0805 SMD Capacitance	0805 2.2UF/16V ±10% 3K/REEL	9	C33.C53.C54.C98.C106.C107.C108.C109.C111
39	CBC-104	0805 SMD Capacitance	0805 104P 10%	2	C94.C101
43	PCB-0520DH-MAIN	PCB-VRCD500-MAIN	MAIN-VRCD500.PCB 170.8X316/2	1	

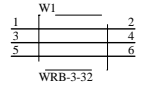
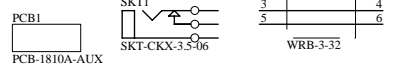
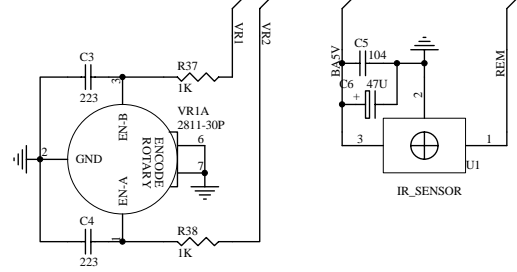
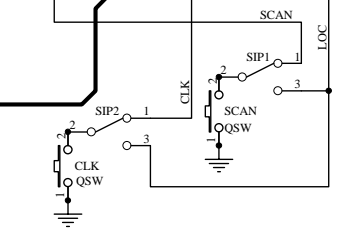
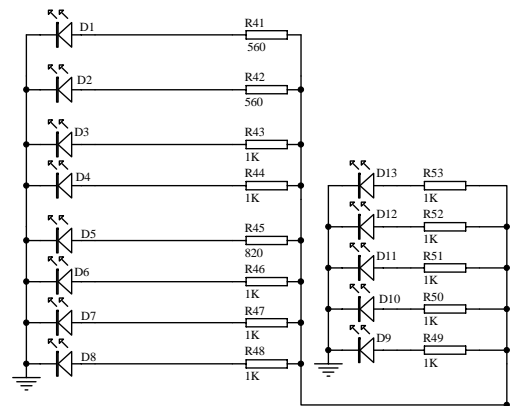
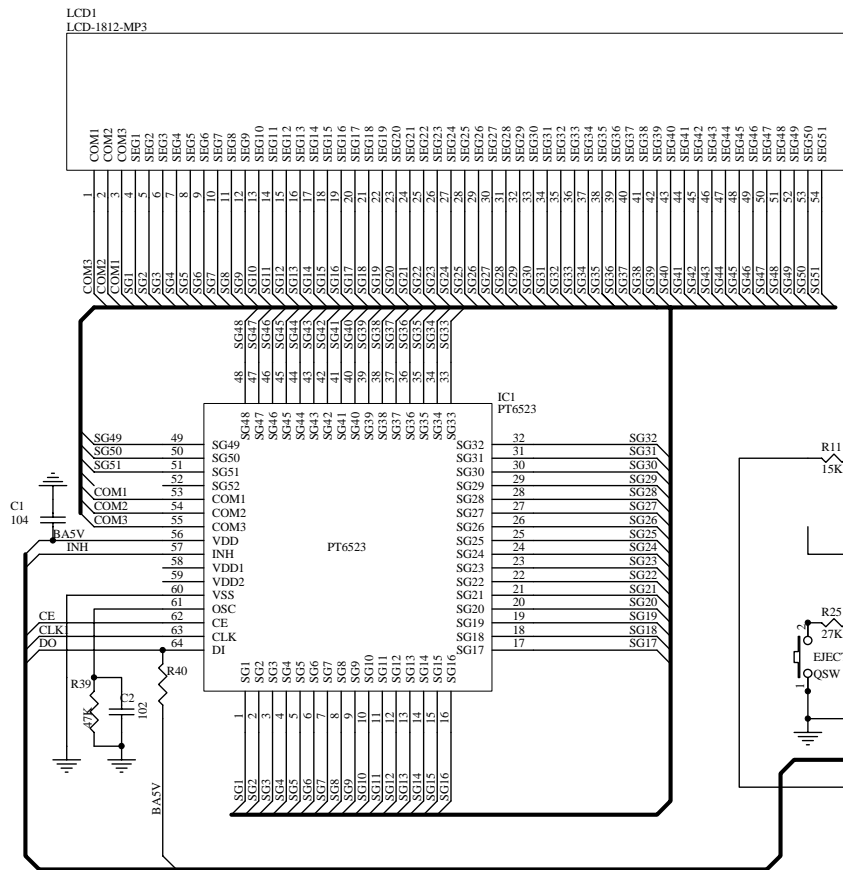
Line	ChildItem	Name1	Specification1	Qty	Remarks2
45	RCF-1206-15	1206 SMD Resistance	1206 15 ohm 5%	3	R197.R198.R199
47	RCF-1206-22	1206 SMD Resistance	1206 22 ohm 5%	5	R170.R171.R249.R250.R255
49	RCF-1206-0	1206 SMD Resistance	1206 0 ohm 5%	1	R172
51	RCF-RBR-0	0805 SMD Resistance	0805 0 ohm 5%	1	R2
53	RCF-RBR-100	0805 SMD Resistance	0805 100 ohm 5%	2	R155.R156
55	RCF-RBR-1K	0805 SMD Resistance	0805 1K ohm 5%	1	R77
57	RCF-RBR-270	0805 SMD Resistance	0805 270 ohm 5%	2	R151.R152
59	RCF-0603-0	0603 SMD Resistance	0603 0 ohm 5%	9	R12.R69.R80.R149.R210.R223.R225.R234.R271
61	RCF-0603-10	0603 SMD Resistance	0603 10 ohm 5%	2	R120.R140
63	RCF-0603-100	0603 SMD Resistance	0603 100 ohm 5%	3	R71.R138.R139
65	RCF-0603-100K	0603 SMD Resistance	0603 100K ohm 5%	10	R35.R59.R60.R63.R81.R177.R189.R218.R231.R246
67	RCF-0603-10K	0603 SMD Resistance	0603 10K ohm 5%	24	R5.R6.R29.R34.R38.R40.R41.R47.R57.R61.R72.R82.R111.R113.R128.R129.R134.R135.R159.R160.R166.R178.R214.R220
69	RCF-0603-120K	0603 SMD Resistance	0603 120K ohm 5%	6	R88.R89.R90.R91.R103.R153
71	RCF-0603-12K	0603 SMD Resistance	0603 12K ohm 5%	2	R37.R48
73	RCF-0603-150K	0603 SMD Resistance	0603 150K ohm 5%	2	R121.R124
75	RCF-0603-1K	0603 SMD Resistance	0603 1K ohm 5%	31	R7.R8.R11.R17.R18.R19.R20.R46.R74.R79.R96.R97.R98.R122.R123.R131.R180.R136.R142.R168.R173.R176.R181.R217.R219.R227.R228.R229.R230.R232.R240
77	RCF-0603-1M	0603 SMD Resistance	0603 1M ohm 5%	2	R21.R87
79	RCF-0603-22K	0603 SMD Resistance	0603 22K ohm 5%	25	R1.R13.R36.R52.R67.R70.R94.R95.R99.R101.R125.R126.R137.R146.R147.R148.R184.R185.R202.R212.R213.R216.R248.R251.R269
81	RCF-0603-27K	0603 SMD Resistance	0603 27K ohm 5%	2	R115.R116

Line	ChildItem	Name1	Specification1	Qty	Remarks2
83	RCF-0603-2.2K	0603 SMD Resistance	0603 2.2K ohm 5%	16	R45.R51.R54.R68.R73.R93.R106.R108.R110.R112.R114.R117.R162.R175.R201.R224
85	RCF-0603-2.2	0603 SMD Resistance	0603 2.2 ohm 5%	2	R31.R179
87	RCF-0603-220K	0603 SMD Resistance	0603 220K ohm 5%	1	R222
89	RCF-0603-3K	0603 SMD Resistance	0603 3K ohm 5%	1	R49
91	RCF-0603-3.3K	0603 SMD Resistance	0603 3.3K ohm 5%	2	R25.R200
93	RCF-0603-3.9K	0603 SMD Resistance	0603 3.9K ohm 5%	2	R186.R187
95	RCF-0603-47K	0603 SMD Resistance	0603 47K ohm 5%	33	R3.R9.R10.R15.R16.R27.R33.R39.R42.R50.R75.R76.R85.R130.R141.R154.R158.R161.R167.R169.R188.R194.R195.R196.R203.R204.R221.R259.R260.R261.R263.R264.R265
97	RCF-0603-470K	0603 SMD Resistance	0603 470K ohm 5%	1	R254
99	RCF-0603-4.7K	0603 SMD Resistance	0603 4.7K ohm 5%	8	R22.R23.R44.R118.R119.R132.R133.R193
101	RCF-0603-56	0603 SMD Resistance	0603 56 ohm 5%	5	R163.R164.R165.R244.R245
103	RCF-0603-56K	0603 SMD Resistance	0603 56K ohm 5%	1	R56
105	RCF-0603-5.6K	0603 SMD Resistance	0603 5.6K ohm 5%	6	R14.R53.R62.R104.R105.R247
107	RCF-0603-560K	0603 SMD Resistance	0603 560K ohm 5%	1	R84
109	RCF-0603-6.8K	0603 SMD Resistance	0603 6.8K ohm 5%	2	R107.R109
111	RCF-0603-8.2K	0603 SMD Resistance	0603 8.2K ohm 5%	5	R78.R86.R127.R182.R183
113	TRS-SOT-23-9014	SMD Audion	TRANSIRTON PMBT3904 3K/REEL=9014-SOT23	11	Q3.Q7.Q8.Q13.Q17.Q19.Q24.Q28.Q29.Q30.Q31
115	TRS-SOT-23-9015	SMD Audion	TRANSIRTON 3K/REEL=9015-SOT23	1	Q33
117	TRS-SOT-23-8050C	SMD Audion	TRANSIRTON 8050C-SOT23 3K/REEL	3	Q14.Q21.Q22
119	TRS-SOT-23-S8550	SMD Audion	TRANSIRTON S8550-SOT23	3	Q23.Q16.Q18
121	TRS-SOT-89-78L05	SMD Audion	KEC SOT-89-78L05	1	U1
123	TRS-TO-252-78M05	SMD Audion	TRANSIRTON 78M05-TO252 2.5K/REEL	1	Q11

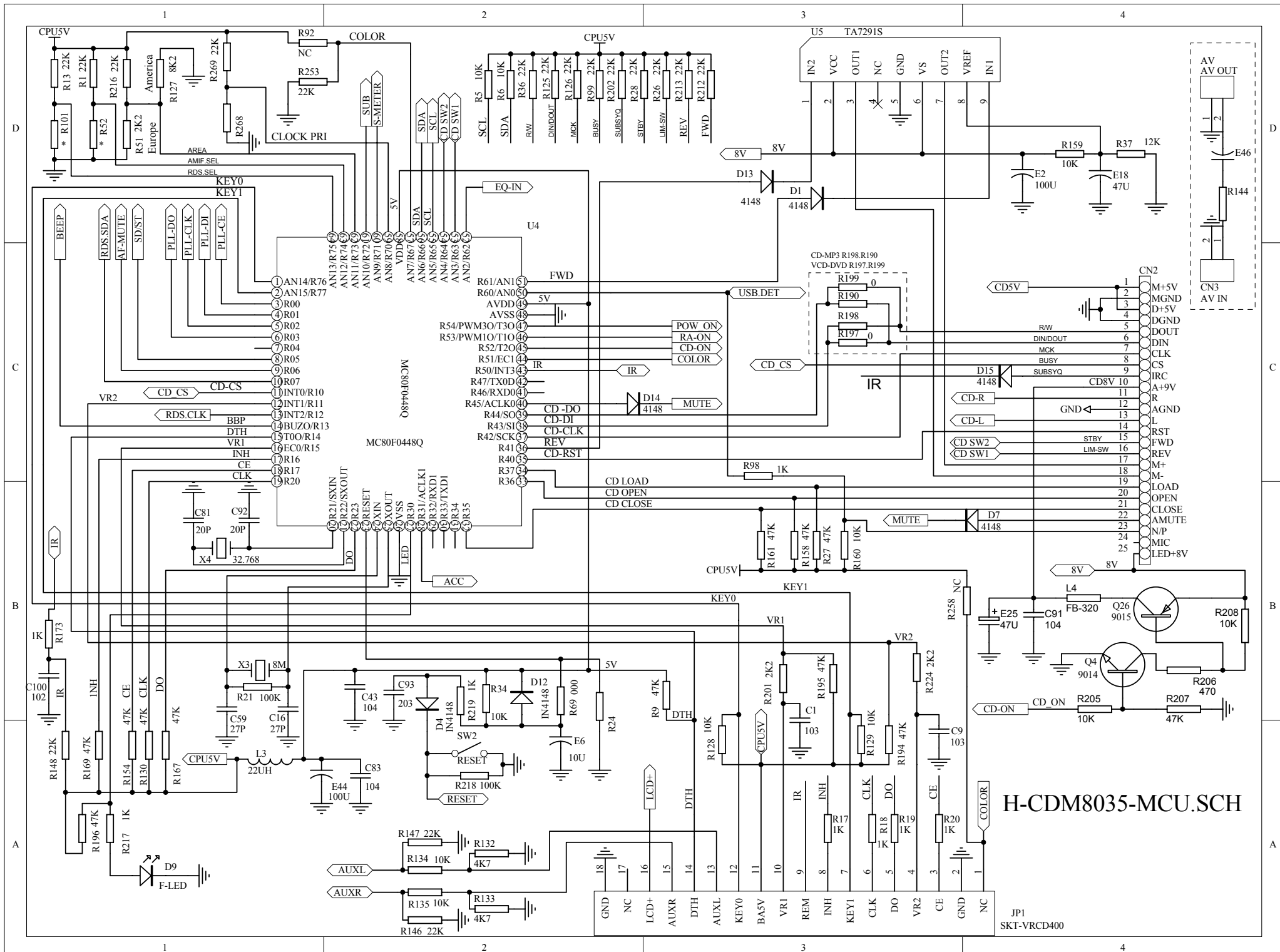
Line	ChildItem	Name1	Specification1	Qty	Remarks2
125	TRS-PBSS5540E	SMD Audion	POTRS-PBSS5540	2	Q12.Q35
127	TRS-SOT-89-KTC4375	SMD Audion	TRANSIRTON SOT-89-KTC4375	1	Q36
129	DDE-SMD-1N4148	SMD Diode	DDE-SMD-1N4148 RECTIFER DIODE	11	D1.D2.D3.D4.D8.D12.D13.D14.D18.D19.D22
131	DDE-SMD-10V	SMD Diode	DDE-BEV55-C10V	2	D20.D11
133	DDE-SMD-5V6	SMD Diode	DDE-BEV55-C5V6	2	D5.D6
135	DDE-SMD-6V8	SMD Diode	DDE-BEV55-C6V8	1	D17
137	DDE-D0214-1N4001	SMD Diode	DDE-D0214-1N4001	3	D10.D16.D23
139	DDE-SMD-1N5822	SMD Diode	SF-1610	1	D25
141	CLL-0805-22UH	0805 SMD Inductance	PEAKING COIL 0805-22UH	2	L1.L3
143	CLL-0805-M400HT	0805 SMD Inductance	PEAKING COIL 0805-40 ohm	2	L5.L7
145	LED-0603-GR	0805 SMD Inductance	LED 0603 GREEN YD-526-528/IV-200-230 VF-3.1-3.2	1	D24
147	CEL-SMD-100-16	Aluminium Capacitor	100UF16V 6.3*5.4 105°C+-20%	11	E5.E19.E26.E53.E56.E2.E8.E14.E23.E54.E55
149	CEL-SMD-1-50	Aluminium Capacitor	1UF/50V 4*5.4 105°C+-20%	2	E21.E27
151	CEL-SMD-10-16	Aluminium Capacitor	10UF/16V 4*5.4 105°C+-20%	2	E6.E22
153	CEL-SMD-22-16	Aluminium Capacitor	E.CAP-SMD 22UF-16V 5*5.4 105°C+-20%	1	E30
155	CEL-SMD-2.2-50	Aluminium Capacitor	E.CAP-SMD 2.2UF-50V 4*5.4 105°C+-20%	5	E10.E11.E16.E17.E24
157	CEL-SMD-47-16	Aluminium Capacitor	47UF/16V 5*5.4 105°C+-20%	16	E15.E52.E57.E3.E7.E9.E12.E18.E20.E31.E38.E41.E47.E48.E49.E50
159	CEL-SMD-4.7-25	Aluminium Capacitor	4.7UF/25V 4*5.4 105°C+-20%	8	E29.E33.E34.E35.E36.E37.E39.E40
160	CEL-SMD-6.8-50	Aluminium Capacitor	E.CAP-SMD 6.8UF-50V 4*5.4 105°C+-20%	1	E42
161	SKT-PTC-72-030-SMD	SMD Can comeback fuse	PTC SMD-030 2KPCS/REEL	2	PTC1.PTC2
163	ICC-AT1796-50A	IC	ICC-AT1796-50A FOR DVD-8029	1	U2
165	ICC-HY-F0448-VRCD500	IC	IC HY-F0448 MCU FOR VRCD500 (MC80F0448Q)	1	U4
167	ICC-SC7313L	IC	IC-SC7313L AUDIO PROCESSOR (SOP)	1	IC6

Line	ChildItem	Name1	Specification1	Qty	Remarks2
169	ICC-PT2579SN	IC	ICC-PT2579SN	1	IC1
171	ICC-LC72131-SMD	IC	ICC-SOP-LC72131	1	IC2
173	ICC-SO8-4558	IC	IC-SO8-4558 FOR VCD/2808	2	IC3.IC4
175	CCS-104Z-25-B	CCS	104Z 25V B=+80%~-20%	1	C47
177	TRS-L7808CV	Audion	TRANSIRTON L7808CV	1	U3
179	TRS-8050C	Audion	TRANSIRTON 8050C	1	Q15
181	DDE-1N5401	Diode	DDE-1N5401 DC RECTIFER DIODE	1	D21
183	CEL-1000-16-8X16-H	Capacitor	1000UF/16V 8X16 H=105°C	1	E32
185	CEL-2200-16-H	Capacitor	2200UF/16V H=105°C	1	E13
187	CEL-470-10-L	Capacitor	470UF/10V L=85°C	1	E4
189	CEL-470-16-L	Capacitor	470UF/16V 8X12 L=85°C	1	E45
191	ICC-TA7291S	IC	IC-TA7291S	1	U5
193	ICC-TDA8571	IC	IC-TDA8571 SGS HI-POWER	1	IC5
195	SKT-16P-F	Socket	CONNECTOR 16P 3850 FEMALE HOUSE	1	CN1
197	CLL-2808-POW-1	Inductance	ROHS COIL 100UH±15% R1H9-878382	1	L2
199	CLL-DCD	Inductance	ROHS HIC7-874596 CLL-DCD	1	L6
201	CSL-4.332-20PF±15	Transistor	49/S 4.332MHZ 20PF±15PPM	1	X1
203	CSL-4.5H-VCD-20PF	Transistor	49/S 4.5MHZ 20PF±15PPM	1	X2
205	CSL-12MHZ-20PF±15	Transistor	49/S 12MHZ 20PF±15PPM	1	X3
207	CSL-32.768-12.5PF	Transistor	3X8 32.768MHZ 12.5PF±20PPM	1	X4
209	LED-2.8-RD	LED	LED 2.8MM RED 3R4HD-6 DIFFUSED	1	D9
210	CEL-C-100-10-5X5-L	Capacitor	CDIIX 100UF/10V 5X5 L=85°C	1	
211	SKT-AV4-8.4-13	Socket	RCA SKT AV4-8.4-13	1	

Line	ChildItem	Name1	Specification1	Qty	Remarks2
213	SKT-FPS-16-32GG	Socket	16P SLIDE SOCKET FPS1632X	1	
215	SWH-TAT-4V	Switch	TACH SWITCH 4PIN	1	
221	TUN-KST-1787-RDS	TUNNER	TUNER KST1787-RDS FOR VR3&RDS-CDMP3	1	
223	WCN-RAG-40P-U1810	WCN	COWNECTOR RIGHT ANGLE-40PINS 2.0	0.25	
225	SKT-9050-USB	Socket		1	
227	SKT-DVD1810-16P	Socket	SKT-DVD1810-16P 1.0-16PSW	1	
229	SKT-DVD-1.0-25P	Socket	SKT-1.0-25P FOR NEW DVD8029(MAIN)	1	
231	PCB-DVD-SD-SKT	PCB-DVD-SD-SKT	FR 1.6K6VO 131.5X91/6	1	
233	SKT-GPSD-SO01	Socket	SD PUSH-PULL CONNECTOR STAND-OFF	1	
235	WRS-RC331-1365	LINE	SHIELD WIRE RC331-1365	1	

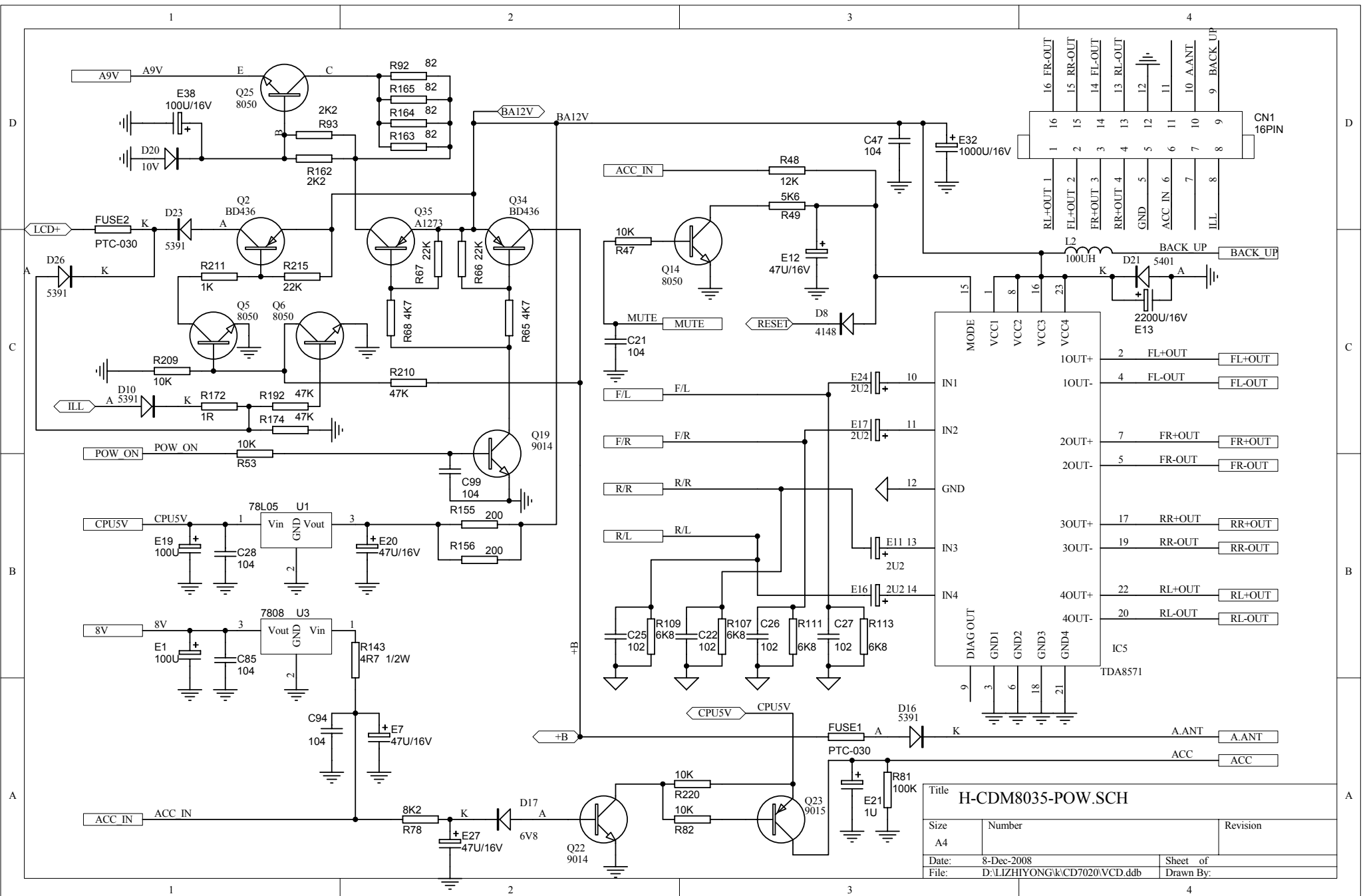


Title		
H-CDM8035-KEY.SCH		
Size	Number	Revision
A3		
Date:	8-Dec-2008	Sheet of
File:	D:\protefile\KEY\132-HY-DVD-1820-KE	Yubin By:

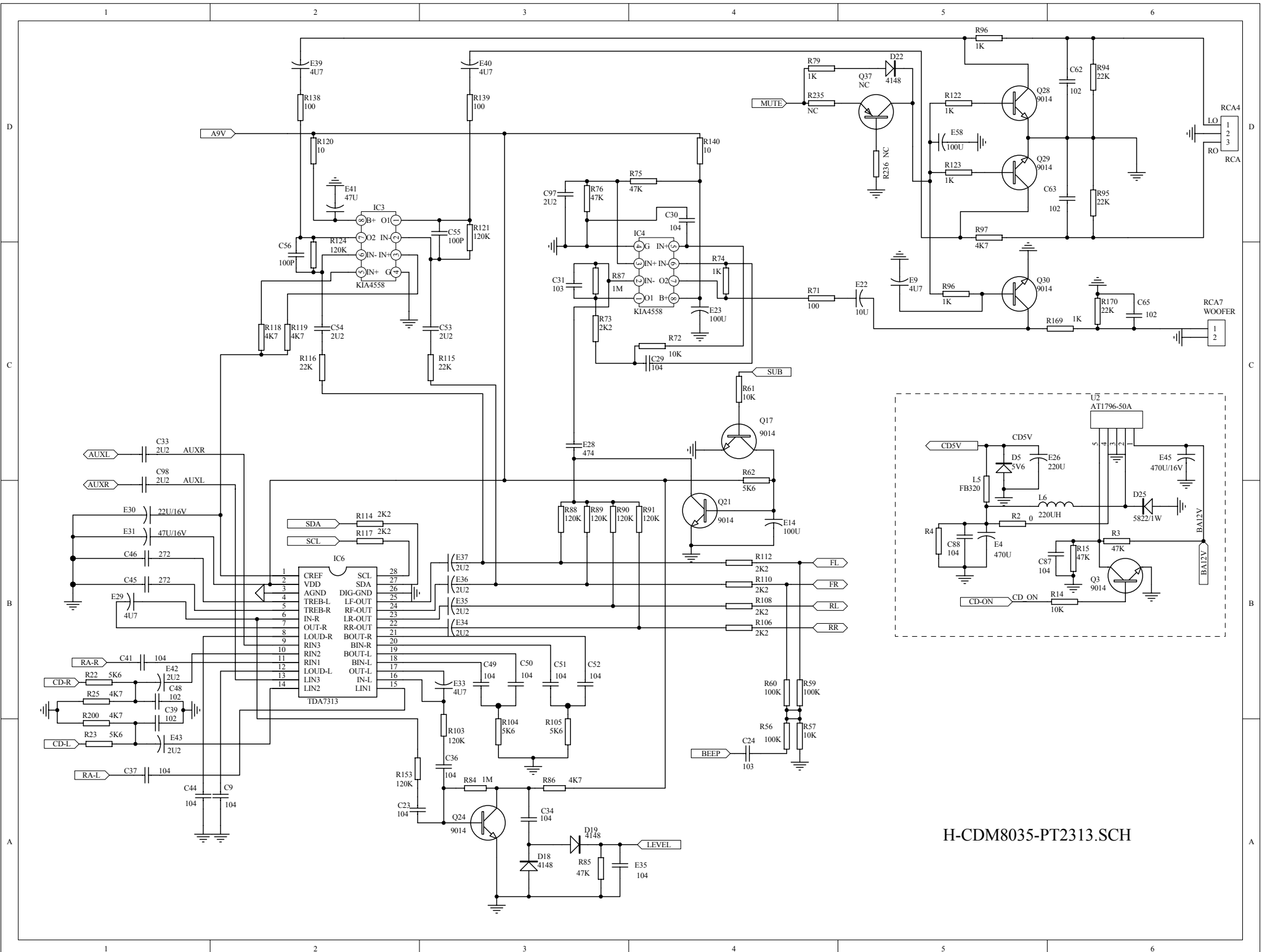


H-CDM8035-MCU.SCH

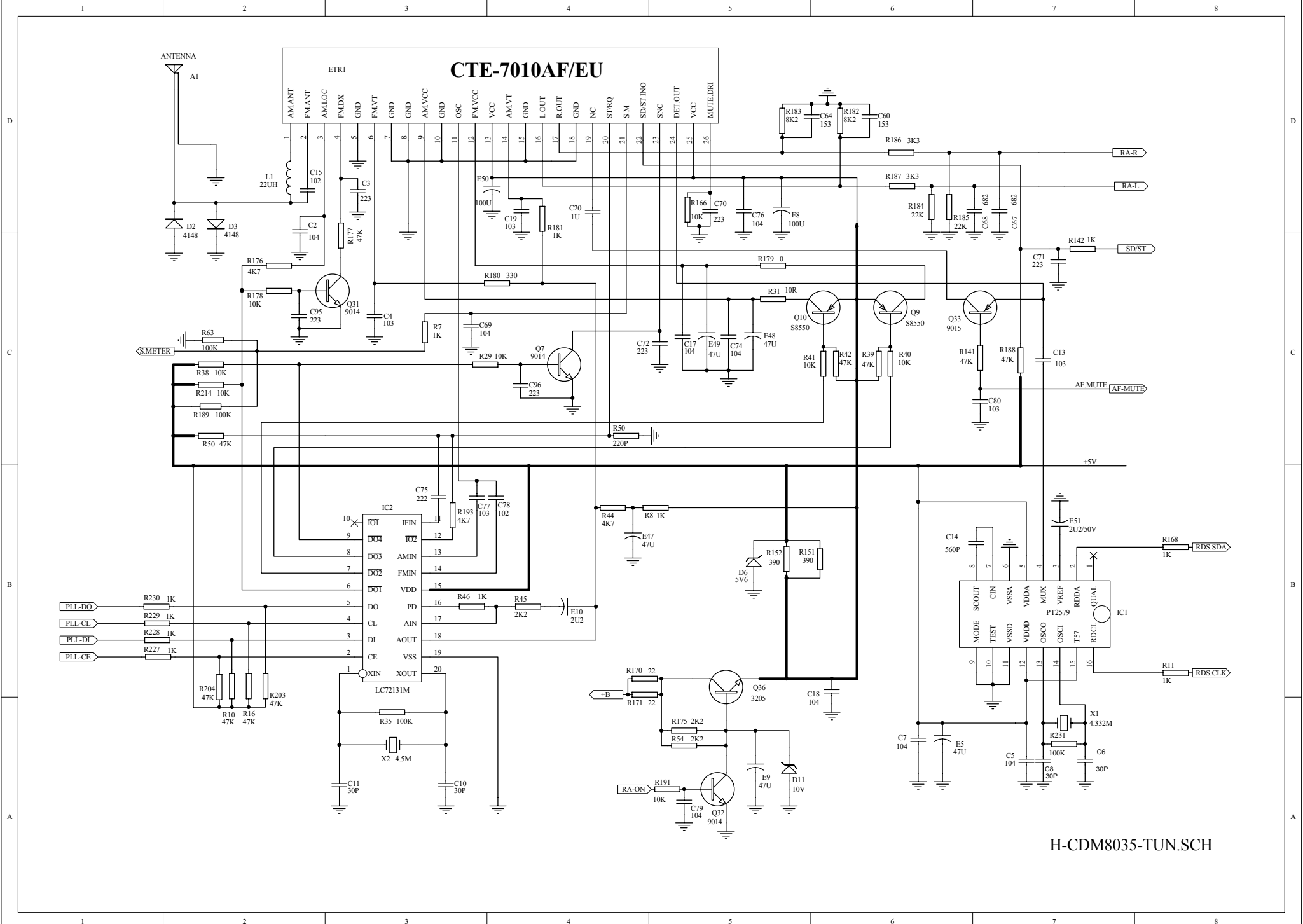
JP1 SKT-VRCD400



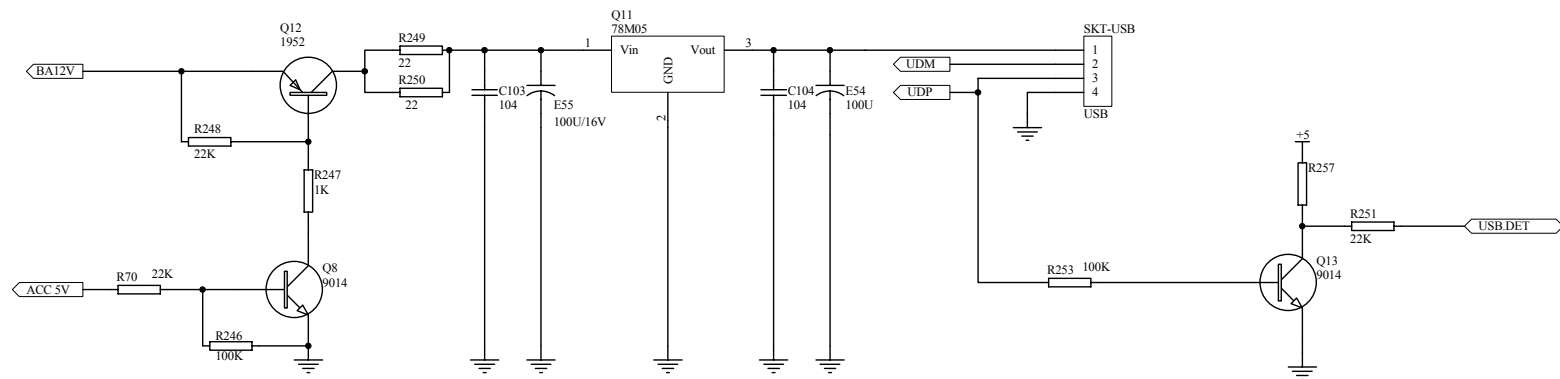
Title			H-CDM8035-POW.SCH		
Size	Number	Revision			
A4					
Date:	8-Dec-2008	Sheet of			
File:	D:\LIZHIYONG\k\CD7020\VCD.ddb	Drawn by:			



H-CDM8035-PT2313.SCH



H-CDM8035-TUN.SCH



H-CDM8035-USB.SCH